



ELECTRONIC COPY

LG642422080
Report verification at igi.org



August 13, 2024

IGI Report Number **LG642422080**

Description **LABORATORY GROWN DIAMOND**

Shape and Cutting Style **PRINCESS CUT**

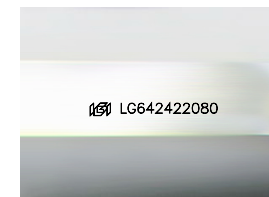
Measurements **9.44 X 9.38 X 6.73 MM**

GRADING RESULTS

Carat Weight **5.26 CARATS**

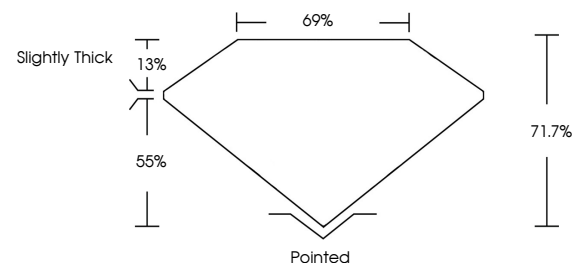
Color Grade **F**

Clarity Grade **VVS 2**

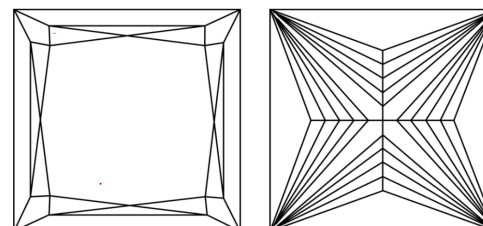


Sample Image Used

PROPORTIONS



CLARITY CHARACTERISTICS



KEY TO SYMBOLS

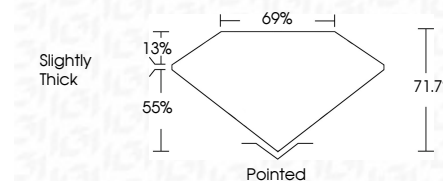
Red symbols indicate internal characteristics.
Green symbols indicate external characteristics.

COLOR

D E F G H I J Faint Very Light Light

CLARITY

IF	VS ¹⁻²	VS ¹⁻²	SI ¹⁻²	I ¹⁻³
Internally Flawless	Very Very Slightly Included	Very Slightly Included	Slightly Included	Included



ADDITIONAL GRADING INFORMATION

Polish **EXCELLENT**

Symmetry **EXCELLENT**

Fluorescence **NONE**

Inscription(s) **IGI LG642422080**

Comments: This Laboratory Grown Diamond was created by Chemical Vapor Deposition (CVD) growth process.
Type IIa



IGI



August 13, 2024
IGI Report No LG642422080
PRINCESS CUT

5.26 CARATS
F

9.44 X 9.38 X 6.73 MM
VVS 2
71.7%
69%
Slightly Thick

Pointed
EXCELLENT
EXCELLENT
NONE
IGI LG642422080

Comments: This Laboratory Grown Diamond was created by Chemical Vapor Deposition (CVD) growth process.
Type IIa