



ELECTRONIC COPY

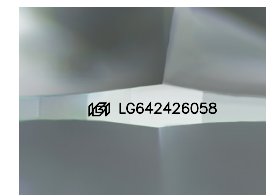
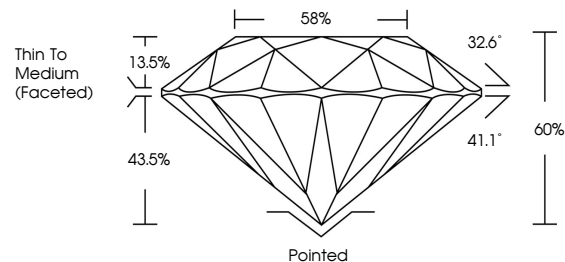
LG642426058
Report verification at igi.org



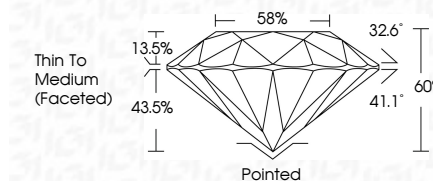
July 3, 2024
IGI Report Number LG642426058
Description LABORATORY GROWN DIAMOND
Shape and Cutting Style ROUND BRILLIANT
Measurements 7.17 - 7.21 X 4.31 MM
GRADING RESULTS
Carat Weight 1.34 CARAT
Color Grade F
Clarity Grade VS 1
Cut Grade EXCELLENT

July 3, 2024
IGI Report Number LG642426058
Description LABORATORY GROWN DIAMOND
Shape and Cutting Style ROUND BRILLIANT
Measurements 7.17 - 7.21 X 4.31 MM
GRADING RESULTS
Carat Weight 1.34 CARAT
Color Grade F
Clarity Grade VS 1
Cut Grade EXCELLENT

PROPORTIONS



Sample Image Used



ADDITIONAL GRADING INFORMATION

Polish EXCELLENT
Symmetry EXCELLENT
Fluorescence NONE
Inscription(s) IGI LG642426058

ADDITIONAL GRADING INFORMATION

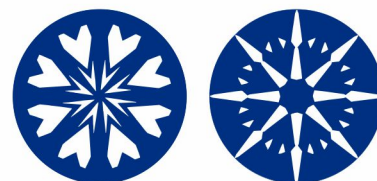
Polish EXCELLENT
Symmetry EXCELLENT
Fluorescence NONE
Inscription(s) IGI LG642426058
Comments: HEARTS & ARROWS
This Laboratory Grown Diamond was created by Chemical Vapor Deposition (CVD) growth process. Type IIa

COLOR

D E F G H I J Faint Very Light Light

CLARITY

IF VS 1-2 VS 1-2 SI 1-2 I 1-3
Internally Flawless Very Very Slightly Included Very Slightly Included Slightly Included Included



IGI

July 3, 2024
IGI Report No LG642426058
ROUND BRILLIANT
7.17 - 7.21 X 4.31 MM
1.34 CARAT
Color Grade F
Clarity Grade VS 1
Depth 65%
Table 86%
Girdle Thin To Medium (Faceted)
Culet Pointed
Polish EXCELLENT
Symmetry EXCELLENT
Fluorescence NONE
Inscriptions(s) IGI LG642426058
Comments: HEARTS & ARROWS
This Laboratory Grown Diamond was created by Chemical Vapor Deposition (CVD) growth process. Type IIa