



**INTERNATIONAL
GEMOLOGICAL
INSTITUTE**

LABORATORY GROWN DIAMOND REPORT

July 3, 2024
 IGI Report Number **LG642428331**
 Description **LABORATORY GROWN DIAMOND**
 Shape and Cutting Style **ROUND BRILLIANT**
 Measurements **6.07 - 6.11 X 3.67 MM**

GRADING RESULTS

Carat Weight **0.83 CARAT**
 Color Grade **E**
 Clarity Grade **VVS 2**
 Cut Grade **IDEAL**

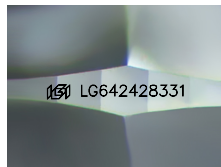
ADDITIONAL GRADING INFORMATION

Polish **EXCELLENT**
 Symmetry **EXCELLENT**
 Fluorescence **NONE**
 Inscription(s) **IGI LG642428331**

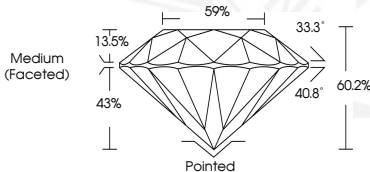
Comments: As Grown - No indication of post-growth treatment. This Laboratory Grown Diamond was created by High Pressure High Temperature (HPHT) growth process. Type II

ELECTRONIC COPY

LG642428331



Sample Image Used



July 3, 2024
 IGI Report Number **LG642428331**
 ROUND BRILLIANT
 LABORATORY GROWN DIAMOND
6.07 - 6.11 X 3.67 MM
 Carat Weight **0.83 CARAT**
 Color Grade **E**
 Clarity Grade **VVS 2**
 Cut Grade **IDEAL**
 Polish **EXCELLENT**
 Symmetry **EXCELLENT**
 Fluorescence **NONE**
 Inscription(s) **IGI LG642428331**
 Comments: As Grown - No indication of post-growth treatment. This Laboratory Grown Diamond was created by High Pressure High Temperature (HPHT) growth process. Type II



July 3, 2024
 IGI Report Number **LG642428331**
 ROUND BRILLIANT
 LABORATORY GROWN DIAMOND
6.07 - 6.11 X 3.67 MM
 Carat Weight **0.83 CARAT**
 Color Grade **E**
 Clarity Grade **VVS 2**
 Cut Grade **IDEAL**
 Polish **EXCELLENT**
 Symmetry **EXCELLENT**
 Fluorescence **NONE**
 Inscription(s) **IGI LG642428331**
 Comments: As Grown - No indication of post-growth treatment. This Laboratory Grown Diamond was created by High Pressure High Temperature (HPHT) growth process. Type II

THIS DOCUMENT WAS PRODUCED WITH THE FOLLOWING SECURITY MEASURES: SPECIAL DOCUMENT PAPER, INK SCREENS, WATERMARK, BACKGROUND DESIGN, HOLOGRAM AND OTHER SECURITY FEATURES NOT LISTED AND DO EXCEED DOCUMENT SECURITY INDUSTRY GUIDELINES.

For terms & conditions and to verify this report, please visit www.igi.org