



ELECTRONIC COPY

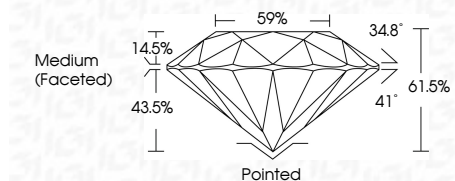
LG642431593
Report verification at igi.org



July 6, 2024
IGI Report Number LG642431593
Description LABORATORY GROWN DIAMOND
Shape and Cutting Style ROUND BRILLIANT
Measurements 8.33 - 8.39 X 5.13 MM

GRADING RESULTS

Carat Weight 2.21 CARATS
Color Grade G
Clarity Grade VVS 2
Cut Grade IDEAL

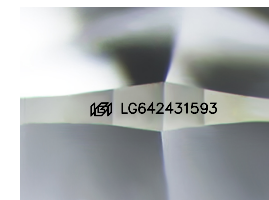


ADDITIONAL GRADING INFORMATION

Polish EXCELLENT
Symmetry EXCELLENT
Fluorescence NONE
Inscription(s) IGI LG642431593
Comments: This Laboratory Grown Diamond was created by Chemical Vapor Deposition (CVD) growth process. Type IIa

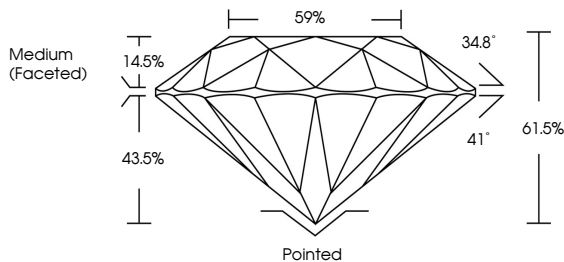


July 6, 2024
IGI Report No. LG642431593
ROUND BRILLIANT
8.33 - 8.39 X 5.13 MM
2.21 CARATS
Color Grade G
Clarity Grade VVS 2
Cut Grade IDEAL
Depth 61.5%
Table 59%
Medium (Faceted)
Culet Pointed
Polish EXCELLENT
Symmetry EXCELLENT
Fluorescence NONE
Inscription(s) IGI LG642431593
Comments: This Laboratory Grown Diamond was created by Chemical Vapor Deposition (CVD) growth process. Type IIa

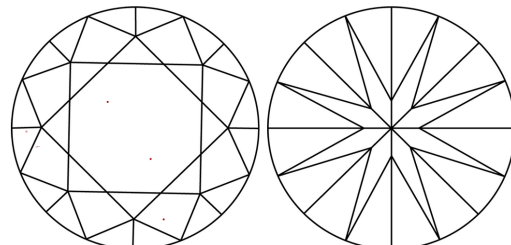


Sample Image Used

PROPORTIONS



CLARITY CHARACTERISTICS



KEY TO SYMBOLS

Red symbols indicate internal characteristics.
Green symbols indicate external characteristics.

COLOR

D E F G H I J Faint Very Light Light

CLARITY

IF VVS 1-2 VS 1-2 SI 1-2 I 1-3
Internally Flawless Very Very Slightly Included Very Slightly Included Slightly Included Included

