



ELECTRONIC COPY

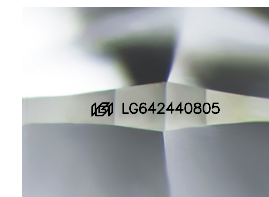
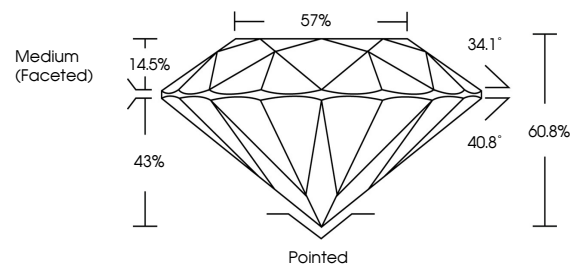
LG642440805
Report verification at igi.org



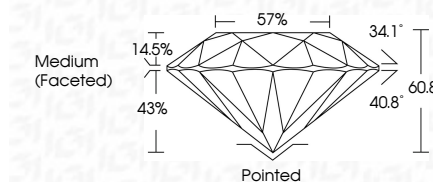
July 4, 2024
IGI Report Number LG642440805
Description LABORATORY GROWN DIAMOND
Shape and Cutting Style ROUND BRILLIANT
Measurements 7.21 - 7.25 X 4.39 MM
GRADING RESULTS
Carat Weight 1.39 CARAT
Color Grade D
Clarity Grade VVS 2
Cut Grade IDEAL

July 4, 2024
IGI Report Number LG642440805
Description LABORATORY GROWN DIAMOND
Shape and Cutting Style ROUND BRILLIANT
Measurements 7.21 - 7.25 X 4.39 MM
GRADING RESULTS
Carat Weight 1.39 CARAT
Color Grade D
Clarity Grade VVS 2
Cut Grade IDEAL

PROPORTIONS



Sample Image Used



ADDITIONAL GRADING INFORMATION

Polish EXCELLENT
Symmetry EXCELLENT
Fluorescence NONE
Inscription(s) IGI LG642440805

Comments: HEARTS & ARROWS
This Laboratory Grown Diamond was created by Chemical Vapor Deposition (CVD) growth process. Type IIa

ADDITIONAL GRADING INFORMATION

Polish EXCELLENT
Symmetry EXCELLENT
Fluorescence NONE
Inscription(s) IGI LG642440805
Comments: HEARTS & ARROWS
This Laboratory Grown Diamond was created by Chemical Vapor Deposition (CVD) growth process. Type IIa

COLOR

D E F G H I J Faint Very Light Light

CLARITY

IF VVS 1-2 VS 1-2 SI 1-2 I 1-3
Internally Flawless Very Very Slightly Included Very Slightly Included Slightly Included Included



www.igi.org



IGI

July 4, 2024
IGI Report No LG642440805
ROUND BRILLIANT
1.39 CARAT
Color Grade D
Clarity Grade VVS 2
Depth 60.8%
Table 57%
Girdle Medium (Faceted)
Culet Pointed
Polish EXCELLENT
Symmetry EXCELLENT
Fluorescence NONE
Inscription(s) IGI LG642440805
Comments: HEARTS & ARROWS
This Laboratory Grown Diamond was created by Chemical Vapor Deposition (CVD) growth process. Type IIa