



ELECTRONIC COPY

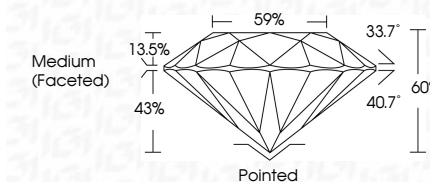
LG642441202
Report verification at igi.org



July 6, 2024
IGI Report Number **LG642441202**
Description **LABORATORY GROWN DIAMOND**
Shape and Cutting Style **ROUND BRILLIANT**
Measurements **8.19 - 8.22 X 4.93 MM**

GRADING RESULTS

Carat Weight **2.03 CARATS**
Color Grade **E**
Clarity Grade **VS 1**
Cut Grade **IDEAL**



ADDITIONAL GRADING INFORMATION

Polish **EXCELLENT**
Symmetry **EXCELLENT**
Fluorescence **NONE**
Inscription(s) **IGI LG642441202**
Comments: This Laboratory Grown Diamond was created by Chemical Vapor Deposition (CVD) growth process. Type IIa



July 6, 2024
IGI Report No **LG642441202**
ROUND BRILLIANT
8.19 - 8.22 X 4.93 MM
2.03 CARATS
E
VS 1
IDEAL
GSI
60%
59%
Medium (Faceted)
Pointed
EXCELLENT
EXCELLENT
NONE
IGI LG642441202
Comments: This Laboratory Grown Diamond was created by Chemical Vapor Deposition (CVD) growth process. Type IIa

July 6, 2024
IGI Report Number **LG642441202**
Description **LABORATORY GROWN DIAMOND**
Shape and Cutting Style **ROUND BRILLIANT**
Measurements **8.19 - 8.22 X 4.93 MM**

GRADING RESULTS

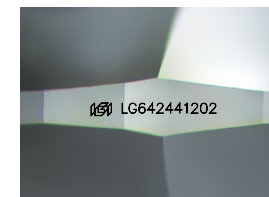
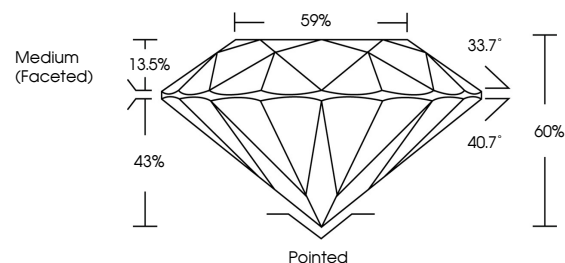
Carat Weight **2.03 CARATS**
Color Grade **E**
Clarity Grade **VS 1**
Cut Grade **IDEAL**

ADDITIONAL GRADING INFORMATION

Polish **EXCELLENT**
Symmetry **EXCELLENT**
Fluorescence **NONE**
Inscription(s) **IGI LG642441202**

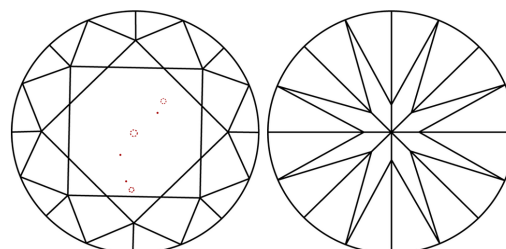
Comments: This Laboratory Grown Diamond was created by Chemical Vapor Deposition (CVD) growth process. Type IIa

PROPORTIONS



Sample Image Used

CLARITY CHARACTERISTICS



KEY TO SYMBOLS

Red symbols indicate internal characteristics.
Green symbols indicate external characteristics.

COLOR

D E F G H I J Faint Very Light Light

CLARITY

| | | | | |
|---------------------|-----------------------------|------------------------|-------------------|------------------|
| IF | VS ¹⁻² | VS ¹⁻² | SI ¹⁻² | I ¹⁻³ |
| Internally Flawless | Very Very Slightly Included | Very Slightly Included | Slightly Included | Included |

