

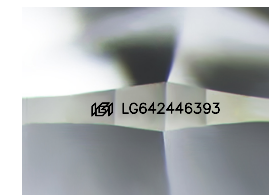


**ELECTRONIC COPY**

LG642446393  
Report verification at igi.org

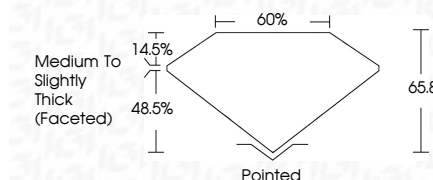
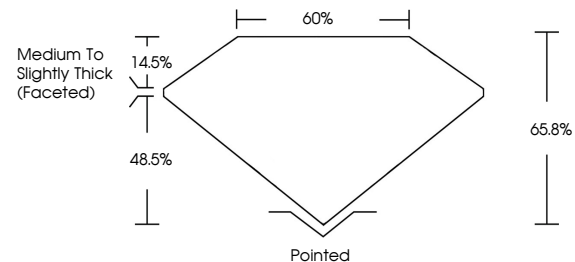


July 6, 2024  
IGI Report Number **LG642446393**  
Description **LABORATORY GROWN DIAMOND**  
Shape and Cutting Style **CUSHION MODIFIED BRILLIANT**  
Measurements **7.30 X 6.05 X 3.98 MM**  
**GRADING RESULTS**  
Carat Weight **1.29 CARAT**  
Color Grade **F**  
Clarity Grade **VVS 2**



Sample Image Used

**PROPORTIONS**



July 6, 2024  
IGI Report Number **LG642446393**  
Description **LABORATORY GROWN DIAMOND**  
Shape and Cutting Style **CUSHION MODIFIED BRILLIANT**  
Measurements **7.30 X 6.05 X 3.98 MM**  
**GRADING RESULTS**  
Carat Weight **1.29 CARAT**  
Color Grade **F**  
Clarity Grade **VVS 2**

**ADDITIONAL GRADING INFORMATION**

Polish **EXCELLENT**  
Symmetry **EXCELLENT**  
Fluorescence **NONE**  
Inscription(s) **IGI LG642446393**

Comments: This Laboratory Grown Diamond was created by Chemical Vapor Deposition (CVD) growth process. Type IIa

**COLOR**

D E F G H I J Faint Very Light Light

**CLARITY**

IF	VVS <sup>1-2</sup>	VS <sup>1-2</sup>	SI <sup>1-2</sup>	I <sup>1-3</sup>
Internally Flawless	Very Very Slightly Included	Very Slightly Included	Slightly Included	Included

**ADDITIONAL GRADING INFORMATION**

Polish **EXCELLENT**  
Symmetry **EXCELLENT**  
Fluorescence **NONE**  
Inscription(s) **IGI LG642446393**  
Comments: This Laboratory Grown Diamond was created by Chemical Vapor Deposition (CVD) growth process. Type IIa



**IGI**

July 6, 2024  
IGI Report No **LG642446393**  
**CUSHION MODIFIED BRILLIANT**  
7.30 X 6.05 X 3.98 MM  
1.29 CARAT  
F  
VVS 2  
65.8%  
60%  
Medium to Slightly Thick (Faceted)  
Pointed  
EXCELLENT  
EXCELLENT  
NONE  
IGI LG642446393

Comments: This Laboratory Grown Diamond was created by Chemical Vapor Deposition (CVD) growth process. Type IIa