



ELECTRONIC COPY

LG642447231
Report verification at igi.org



July 8, 2024

IGI Report Number **LG642447231**

Description **LABORATORY GROWN DIAMOND**

Shape and Cutting Style **CUSHION BRILLIANT**

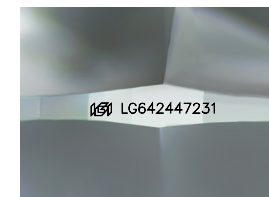
Measurements **12.25 X 9.51 X 6.55 MM**

GRADING RESULTS

Carat Weight **6.12 CARATS**

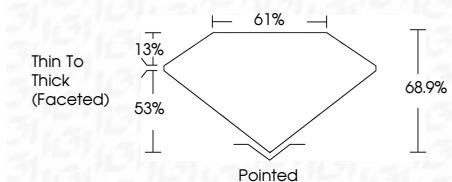
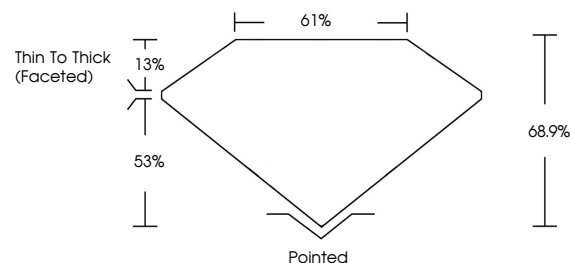
Color Grade **E**

Clarity Grade **VS 1**

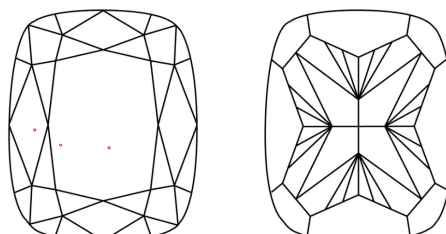


Sample Image Used

PROPORTIONS



CLARITY CHARACTERISTICS



KEY TO SYMBOLS

Red symbols indicate internal characteristics.
Green symbols indicate external characteristics.

COLOR

D E F G H I J Faint Very Light Light

CLARITY

IF	VS ¹⁻²	VS ¹⁻²	SI ¹⁻²	I ¹⁻³
Internally Flawless	Very Very Slightly Included	Very Slightly Included	Slightly Included	Included

ADDITIONAL GRADING INFORMATION

Polish **EXCELLENT**

Symmetry **EXCELLENT**

Fluorescence **NONE**

Inscription(s) **IGI LG642447231**

Comments: This Laboratory Grown Diamond was created by Chemical Vapor Deposition (CVD) growth process. Type IIa



IGI



July 8, 2024
IGI Report No LG642447231
CUSHION BRILLIANT
12.25 X 9.51 X 6.55 MM
6.12 CARATS
E
VS 1
68.9%
61%
Pointed
EXCELLENT
EXCELLENT
NONE
IGI LG642447231

Comments: This Laboratory Grown Diamond was created by Chemical Vapor Deposition (CVD) growth process. Type IIa