



ELECTRONIC COPY

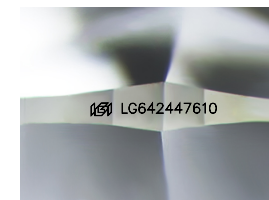
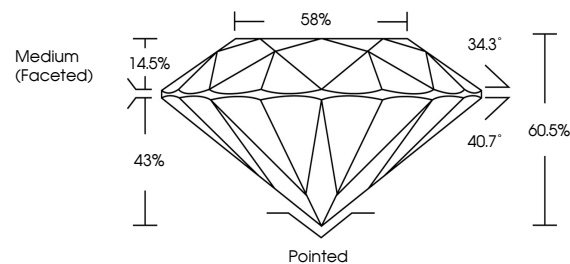
LG642447610
Report verification at igi.org



July 8, 2024
IGI Report Number LG642447610
Description LABORATORY GROWN DIAMOND
Shape and Cutting Style ROUND BRILLIANT
Measurements 9.41 - 9.47 X 5.71 MM
GRADING RESULTS
Carat Weight 3.09 CARATS
Color Grade E
Clarity Grade VS 1
Cut Grade IDEAL

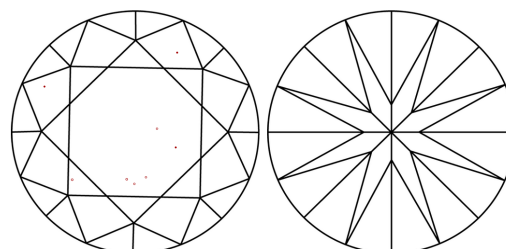
July 8, 2024
IGI Report Number LG642447610
Description LABORATORY GROWN DIAMOND
Shape and Cutting Style ROUND BRILLIANT
Measurements 9.41 - 9.47 X 5.71 MM

PROPORTIONS



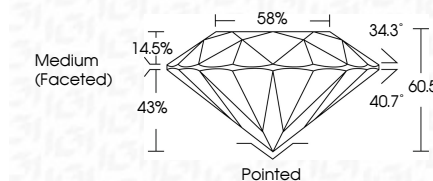
Sample Image Used

CLARITY CHARACTERISTICS



KEY TO SYMBOLS

Red symbols indicate internal characteristics.
Green symbols indicate external characteristics.



ADDITIONAL GRADING INFORMATION

Polish EXCELLENT
Symmetry EXCELLENT
Fluorescence NONE
Inscription(s) IGI LG642447610
Comments: This Laboratory Grown Diamond was created by Chemical Vapor Deposition (CVD) growth process. Type IIa

GRADING RESULTS

Carat Weight 3.09 CARATS
Color Grade E
Clarity Grade VS 1
Cut Grade IDEAL

ADDITIONAL GRADING INFORMATION

Polish EXCELLENT
Symmetry EXCELLENT
Fluorescence NONE
Inscription(s) IGI LG642447610

Comments: This Laboratory Grown Diamond was created by Chemical Vapor Deposition (CVD) growth process. Type IIa

COLOR

D E F G H I J Faint Very Light Light

CLARITY

IF VS 1-2 VS 1-2 SI 1-2 I 1-3
Internally Flawless Very Very Slightly Included Very Slightly Included Slightly Included Included



IGI



July 8, 2024
IGI Report No LG642447610
ROUND BRILLIANT
9.41 - 9.47 X 5.71 MM
3.09 CARATS E
Color Grade VS 1
Clarity Grade IDEAL
Depth 60.5%
Table 58%
Medium (Faceted)
Cutler Pointed
Polish EXCELLENT
Symmetry EXCELLENT
Fluorescence NONE
Inscriptions(s) IGI LG642447610
Comments: This Laboratory Grown Diamond was created by Chemical Vapor Deposition (CVD) growth process. Type IIa