



ELECTRONIC COPY

LG642450340
Report verification at igi.org

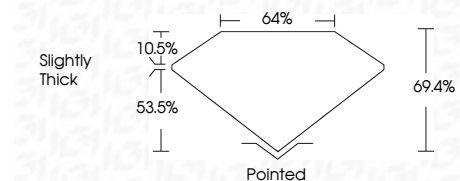


July 11, 2024
IGI Report Number LG642450340
Description LABORATORY GROWN DIAMOND
Shape and Cutting Style CUT CORNERED RECTANGULAR MODIFIED BRILLIANT

Measurements 7.48 X 4.96 X 3.44 MM

GRADING RESULTS

Carat Weight 1.10 CARAT
Color Grade E
Clarity Grade VVS 2



ADDITIONAL GRADING INFORMATION

Polish EXCELLENT
Symmetry EXCELLENT
Fluorescence NONE
Inscription(s) LG642450340

Comments: This Laboratory Grown Diamond was created by Chemical Vapor Deposition (CVD) growth process. Type IIa



July 11, 2024
IGI Report No LG642450340
CUT CORNERED RECT. MODIFIED BRILLIANT
7.48 X 4.96 X 3.44 MM
1.10 CARAT
E
VVS 2
69.4%
10.5%
Slightly Thick
Pointed
EXCELLENT
EXCELLENT
NONE
Inscription(s) LG642450340
Comments: This Laboratory Grown Diamond was created by Chemical Vapor Deposition (CVD) growth process. Type IIa

LABORATORY GROWN DIAMOND REPORT

July 11, 2024
IGI Report Number LG642450340
Description LABORATORY GROWN DIAMOND
Shape and Cutting Style CUT CORNERED RECTANGULAR MODIFIED BRILLIANT
Measurements 7.48 X 4.96 X 3.44 MM

GRADING RESULTS

Carat Weight 1.10 CARAT
Color Grade E
Clarity Grade VVS 2

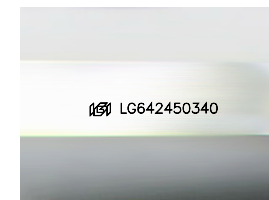
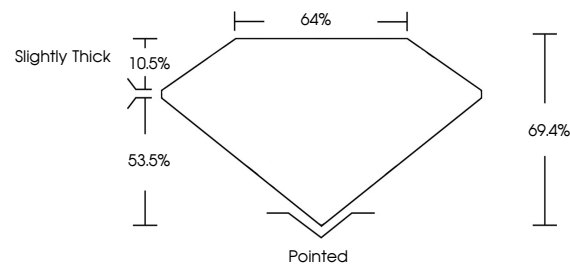
ADDITIONAL GRADING INFORMATION

Polish EXCELLENT
Symmetry EXCELLENT
Fluorescence NONE

Inscription(s) LG642450340

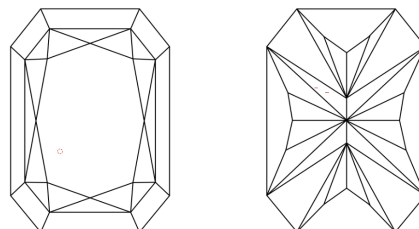
Comments: This Laboratory Grown Diamond was created by Chemical Vapor Deposition (CVD) growth process. Type IIa

PROPORTIONS



Sample Image Used

CLARITY CHARACTERISTICS



KEY TO SYMBOLS

Red symbols indicate internal characteristics.
Green symbols indicate external characteristics.

COLOR

D E F G H I J Faint Very Light Light

CLARITY

IF VVS 1-2 VS 1-2 SI 1-2 I 1-3
Internally Flawless Very Very Slightly Included Very Slightly Included Slightly Included Included