



ELECTRONIC COPY

LG642454213
Report verification at igi.org



July 5, 2024
IGI Report Number LG642454213
Description LABORATORY GROWN DIAMOND
Shape and Cutting Style PRINCESS CUT
Measurements 5.48 X 5.35 X 3.91 MM
GRADING RESULTS
Carat Weight 1.01 CARAT
Color Grade D
Clarity Grade VVS 2

LABORATORY GROWN DIAMOND REPORT

July 5, 2024
IGI Report Number LG642454213
Description LABORATORY GROWN DIAMOND
Shape and Cutting Style PRINCESS CUT
Measurements 5.48 X 5.35 X 3.91 MM

GRADING RESULTS

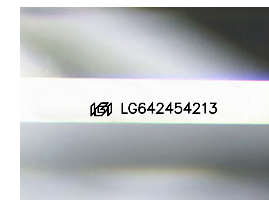
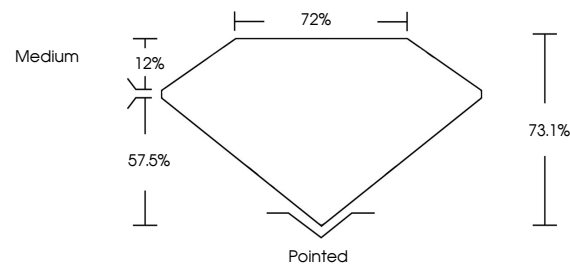
Carat Weight 1.01 CARAT
Color Grade D
Clarity Grade VVS 2

ADDITIONAL GRADING INFORMATION

Polish EXCELLENT
Symmetry EXCELLENT
Fluorescence NONE
Inscription(s) LG642454213

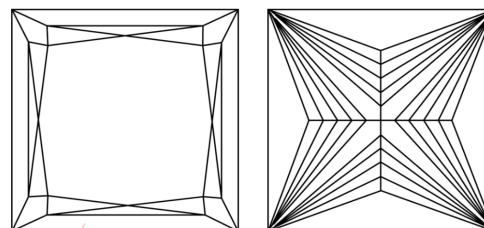
Comments: This Laboratory Grown Diamond was created by Chemical Vapor Deposition (CVD) growth process. Type IIa

PROPORTIONS



Sample Image Used

CLARITY CHARACTERISTICS



KEY TO SYMBOLS

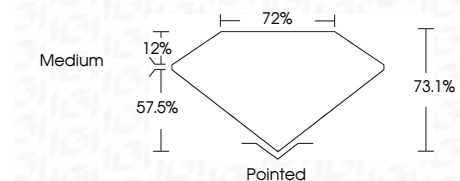
Red symbols indicate internal characteristics.
Green symbols indicate external characteristics.

COLOR

D E F G H I J Faint Very Light Light

CLARITY

IF VVS 1-2 VS 1-2 SI 1-2 I 1-3
Internally Flawless Very Very Slightly Included Very Slightly Included Slightly Included Included



ADDITIONAL GRADING INFORMATION

Polish EXCELLENT
Symmetry EXCELLENT
Fluorescence NONE
Inscription(s) LG642454213
Comments: This Laboratory Grown Diamond was created by Chemical Vapor Deposition (CVD) growth process. Type IIa



July 5, 2024
IGI Report No. LG642454213
PRINCESS CUT
1.01 CARAT D
5.48 X 5.35 X 3.91 MM
Color Grade VVS 2
Depth 73.1%
Table 72%
Girdle Medium
Culet Pointed
Polish EXCELLENT
Symmetry EXCELLENT
Fluorescence NONE
Inscription(s) LG642454213
Comments: This Laboratory Grown Diamond was created by Chemical Vapor Deposition (CVD) growth process. Type IIa