



**INTERNATIONAL
GEMOLOGICAL
INSTITUTE**

ELECTRONIC COPY

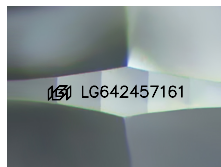
LG642457161



July 9, 2024
IGI Report Number LG642457161
ROUND BRILLIANT
LABORATORY GROWN DIAMOND
3.72 - 3.73 X 2.23 MM
Carat Weight 0.19 CARAT
Color Grade E
Clarity Grade VS 1
Cut Grade VERY GOOD
Polish VERY GOOD
Symmetry VERY GOOD
Fluorescence NONE
Inscription(s) IGI LG642457161
 Comments: This Laboratory Grown Diamond was created by Chemical Vapor Deposition (CVD) growth process. Type IIa

LABORATORY GROWN DIAMOND REPORT

July 9, 2024
 IGI Report Number **LG642457161**
 Description **LABORATORY GROWN DIAMOND**
 Shape and Cutting Style **ROUND BRILLIANT**
 Measurements **3.72 - 3.73 X 2.23 MM**



Sample Image Used

GRADING RESULTS

Carat Weight 0.19 CARAT
Color Grade E
Clarity Grade VS 1
Cut Grade VERY GOOD

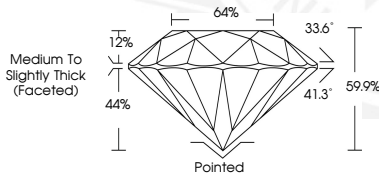
ADDITIONAL GRADING INFORMATION

Polish VERY GOOD
Symmetry VERY GOOD
Fluorescence NONE
Inscription(s) IGI LG642457161

Comments: This Laboratory Grown Diamond was created by Chemical Vapor Deposition (CVD) growth process. Type IIa



July 9, 2024
IGI Report Number LG642457161
ROUND BRILLIANT
LABORATORY GROWN DIAMOND
3.72 - 3.73 X 2.23 MM
Carat Weight 0.19 CARAT
Color Grade E
Clarity Grade VS 1
Cut Grade VERY GOOD
Polish VERY GOOD
Symmetry VERY GOOD
Fluorescence NONE
Inscription(s) IGI LG642457161
 Comments: This Laboratory Grown Diamond was created by Chemical Vapor Deposition (CVD) growth process. Type IIa



THIS DOCUMENT WAS PRODUCED WITH THE FOLLOWING SECURITY MEASURES: SPECIAL DOCUMENT PAPER, INK SCREENS, WATERMARK, BACKGROUND DESIGNS, HOLOGRAM AND OTHER SECURITY FEATURES NOT LISTED AND DO EXCEED DOCUMENT SECURITY INDUSTRY GUIDELINES.

For terms & conditions and to verify this report, please visit www.igi.org