



ELECTRONIC COPY

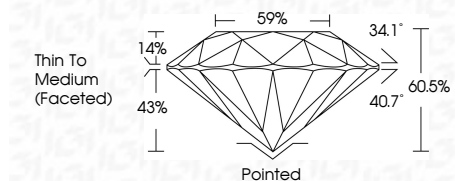
LG642464074 Report verification at igi.org



August 19, 2024 IGI Report Number LG642464074 Description LABORATORY GROWN DIAMOND Shape and Cutting Style ROUND BRILLIANT Measurements 8.37 - 8.43 X 5.09 MM

GRADING RESULTS

Carat Weight 2.22 CARATS Color Grade E Clarity Grade VVS 1 Cut Grade IDEAL



ADDITIONAL GRADING INFORMATION

Polish EXCELLENT Symmetry EXCELLENT Fluorescence NONE Inscription(s) IGI LG642464074 Comments: This Laboratory Grown Diamond was created by Chemical Vapor Deposition (CVD) growth process. Type IIa



August 19, 2024 IGI Report No LG642464074 ROUND BRILLIANT 8.37 - 8.43 X 5.09 MM 2.22 CARATS E Color Grade VVS 1 IDEAL 60.5% 59% Thin To Medium (Faceted) Pointed EXCELLENT EXCELLENT NONE IGI LG642464074 Comments: This Laboratory Grown Diamond was created by Chemical Vapor Deposition (CVD) growth process. Type IIa

August 19, 2024 IGI Report Number LG642464074 Description LABORATORY GROWN DIAMOND Shape and Cutting Style ROUND BRILLIANT Measurements 8.37 - 8.43 X 5.09 MM

GRADING RESULTS

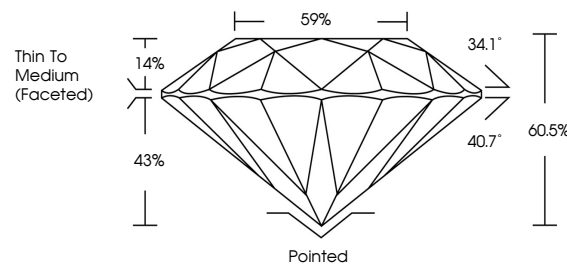
Carat Weight 2.22 CARATS Color Grade E Clarity Grade VVS 1 Cut Grade IDEAL

ADDITIONAL GRADING INFORMATION

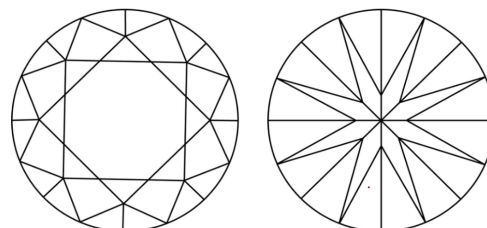
Polish EXCELLENT Symmetry EXCELLENT Fluorescence NONE Inscription(s) IGI LG642464074

Comments: This Laboratory Grown Diamond was created by Chemical Vapor Deposition (CVD) growth process. Type IIa

PROPORTIONS

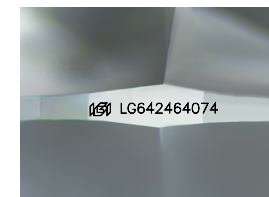


CLARITY CHARACTERISTICS



KEY TO SYMBOLS

Red symbols indicate internal characteristics. Green symbols indicate external characteristics.



Sample Image Used

COLOR

D E F G H I J Faint Very Light Light

CLARITY

IF VVS 1-2 VS 1-2 SI 1-2 I 1-3 Internally Flawless Very Very Slightly Included Very Slightly Included Slightly Included Included

