



ELECTRONIC COPY

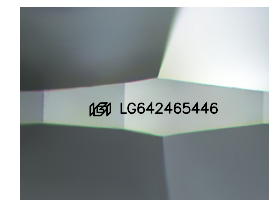
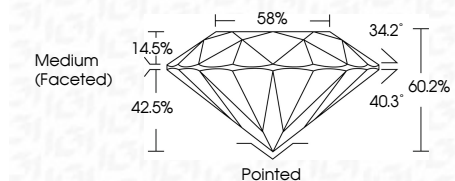
LG642465446
Report verification at igi.org



September 18, 2024
IGI Report Number LG642465446
Description LABORATORY GROWN DIAMOND
Shape and Cutting Style ROUND BRILLIANT
Measurements 8.27 - 8.31 X 4.99 MM

GRADING RESULTS

Carat Weight 2.11 CARATS
Color Grade F
Clarity Grade VS 2
Cut Grade IDEAL



Sample Image Used

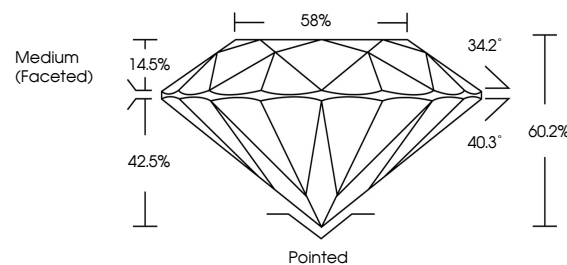
ADDITIONAL GRADING INFORMATION

Polish EXCELLENT
Symmetry EXCELLENT
Fluorescence NONE
Inscription(s) IGI LG642465446
Comments: This Laboratory Grown Diamond was created by Chemical Vapor Deposition (CVD) growth process. Type IIa

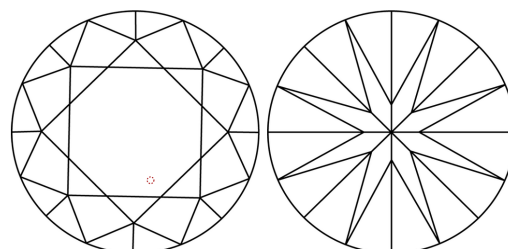


Table with 2 columns: Property and Value. Includes Carat Weight (2.11 CARATS), Color Grade (F), Clarity Grade (VS 2), Depth (60.2%), Table (58%), Grade (Medium (Faceted)), Cut (Pointed), Polish (EXCELLENT), Symmetry (EXCELLENT), Fluorescence (NONE), and Inscription(s) (IGI LG642465446).

PROPORTIONS



CLARITY CHARACTERISTICS



KEY TO SYMBOLS

Red symbols indicate internal characteristics.
Green symbols indicate external characteristics.

COLOR

D E F G H I J Faint Very Light Light

CLARITY

IF VS 1-2 VS 1-2 SI 1-2 I 1-3
Internally Flawless Very Very Slightly Included Very Slightly Included Slightly Included Included



September 18, 2024
IGI Report No. LG642465446
ROUND BRILLIANT

2.11 CARATS F
8.27 - 8.31 X 4.99 MM
Color Grade VS 2
Clarity Grade IDEAL
Depth 60.2%
Table 58%
Grade Medium (Faceted)
Cut Pointed
Polish EXCELLENT
Symmetry EXCELLENT
Fluorescence NONE
Inscription(s) IGI LG642465446

Comments: This Laboratory Grown Diamond was created by Chemical Vapor Deposition (CVD) growth process. Type IIa