



ELECTRONIC COPY

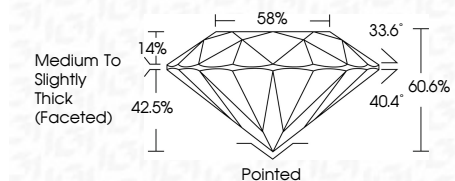
LG642465747
Report verification at igi.org



September 25, 2024
IGI Report Number **LG642465747**
Description **LABORATORY GROWN DIAMOND**
Shape and Cutting Style **ROUND BRILLIANT**
Measurements **6.57 - 6.60 X 3.99 MM**

GRADING RESULTS

Carat Weight **1.07 CARAT**
Color Grade **E**
Clarity Grade **VS 2**
Cut Grade **IDEAL**

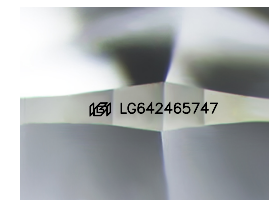


ADDITIONAL GRADING INFORMATION

Polish **EXCELLENT**
Symmetry **EXCELLENT**
Fluorescence **NONE**
Inscription(s) **IGI LG642465747**
Comments: This Laboratory Grown Diamond was created by Chemical Vapor Deposition (CVD) growth process. Type IIa

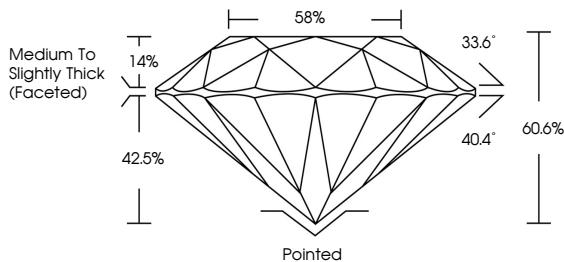


September 25, 2024
IGI Report No **LG642465747**
ROUND BRILLIANT
6.57 - 6.60 X 3.99 MM
Carat Weight **1.07 CARAT**
Color Grade **E**
Clarity Grade **VS 2**
Cut Grade **IDEAL**
Depth **42.5%**
Table **58%**
Girdle **Medium To Slightly Thick (Faceted)**
Culet **Pointed**
Polish **EXCELLENT**
Symmetry **EXCELLENT**
Fluorescence **NONE**
Inscription(s) **IGI LG642465747**
Comments: This Laboratory Grown Diamond was created by Chemical Vapor Deposition (CVD) growth process. Type IIa

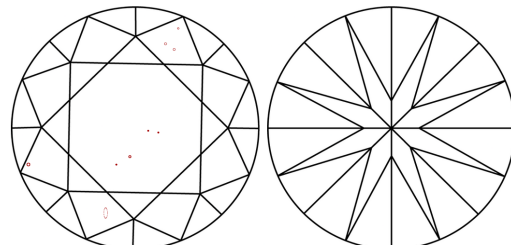


Sample Image Used

PROPORTIONS



CLARITY CHARACTERISTICS



KEY TO SYMBOLS

Red symbols indicate internal characteristics.
Green symbols indicate external characteristics.

COLOR

D E F G H I J Faint Very Light Light

CLARITY

IF	VS ¹⁻²	VS ¹⁻²	SI ¹⁻²	I ¹⁻³
Internally Flawless	Very Very Slightly Included	Very Slightly Included	Slightly Included	Included

