



**ELECTRONIC COPY**

LG642465937  
Report verification at igi.org



September 26, 2024

IGI Report Number **LG642465937**

Description **LABORATORY GROWN DIAMOND**

Shape and Cutting Style **PRINCESS CUT**

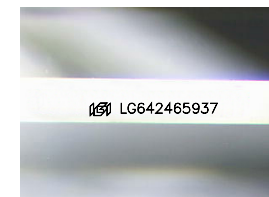
Measurements **9.32 X 9.31 X 6.48 MM**

**GRADING RESULTS**

Carat Weight **5.00 CARATS**

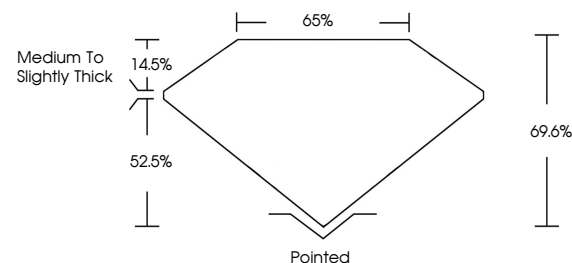
Color Grade **F**

Clarity Grade **VS 1**

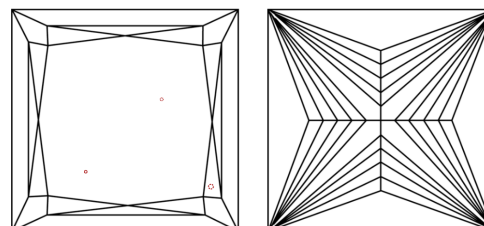


Sample Image Used

**PROPORTIONS**



**CLARITY CHARACTERISTICS**



**KEY TO SYMBOLS**

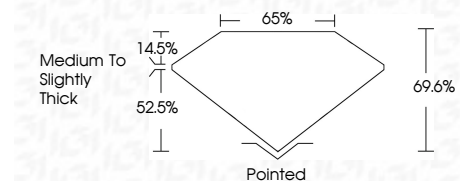
Red symbols indicate internal characteristics.  
Green symbols indicate external characteristics.

**COLOR**

D E F G H I J Faint Very Light Light

**CLARITY**

IF	VS <sup>1-2</sup>	VS <sup>1-2</sup>	SI <sup>1-2</sup>	I <sup>1-3</sup>
Internally Flawless	Very Very Slightly Included	Very Slightly Included	Slightly Included	Included



**ADDITIONAL GRADING INFORMATION**

Polish **EXCELLENT**

Symmetry **EXCELLENT**

Fluorescence **NONE**

Inscription(s) **IGI LG642465937**

Comments: This Laboratory Grown Diamond was created by Chemical Vapor Deposition (CVD) growth process.  
Type IIa



**IGI**



September 26, 2024  
IGI Report No. LG642465937  
PRINCESS CUT

5.00 CARATS  
F

9.32 X 9.31 X 6.48 MM

Carat Weight  
Color Grade  
Clarity Grade  
Table  
Depth  
Girdle  
Medium to Slightly Thick

VS 1  
69.6%  
52.5%

Pointed  
EXCELLENT  
EXCELLENT  
NONE  
IGI LG642465937

Culet  
Polish  
Symmetry  
Fluorescence  
Inscription(s)

Comments: This Laboratory Grown Diamond was created by Chemical Vapor Deposition (CVD) growth process.  
Type IIa