



ELECTRONIC COPY

LG642465945
Report verification at igi.org



September 26, 2024

IGI Report Number LG642465945

Description LABORATORY GROWN DIAMOND

Shape and Cutting Style PRINCESS CUT

Measurements 9.39 X 9.18 X 6.58 MM

GRADING RESULTS

Carat Weight 5.01 CARATS

Color Grade F

Clarity Grade VVS 2

September 26, 2024
IGI Report Number LG642465945
Description LABORATORY GROWN DIAMOND
Shape and Cutting Style PRINCESS CUT
Measurements 9.39 X 9.18 X 6.58 MM

GRADING RESULTS

Carat Weight 5.01 CARATS

Color Grade F

Clarity Grade VVS 2

ADDITIONAL GRADING INFORMATION

Polish EXCELLENT

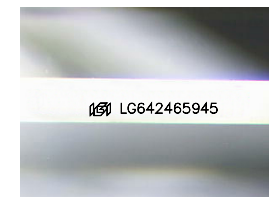
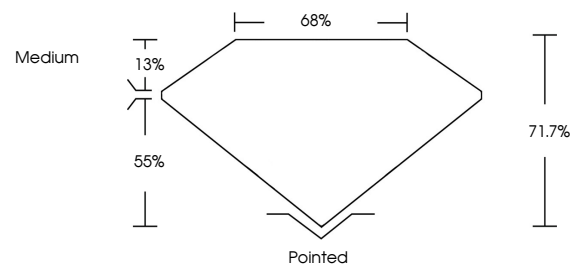
Symmetry EXCELLENT

Fluorescence NONE

Inscription(s) IGI LG642465945

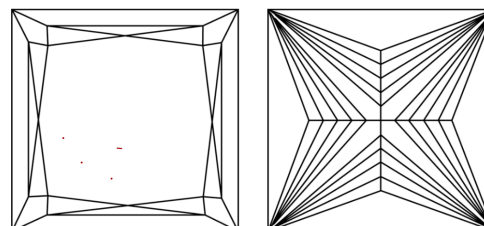
Comments: This Laboratory Grown Diamond was created by Chemical Vapor Deposition (CVD) growth process. Type IIa

PROPORTIONS



Sample Image Used

CLARITY CHARACTERISTICS



KEY TO SYMBOLS

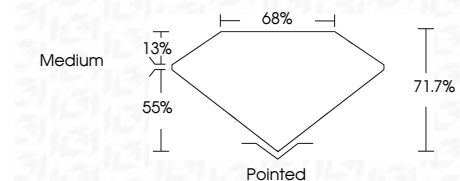
Red symbols indicate internal characteristics.
Green symbols indicate external characteristics.

COLOR

D E F G H I J Faint Very Light Light

CLARITY

IF VVS 1-2 VS 1-2 SI 1-2 I 1-3
Internally Flawless Very Very Slightly Included Very Slightly Included Slightly Included Included



ADDITIONAL GRADING INFORMATION

Polish EXCELLENT

Symmetry EXCELLENT

Fluorescence NONE

Inscription(s) IGI LG642465945

Comments: This Laboratory Grown Diamond was created by Chemical Vapor Deposition (CVD) growth process. Type IIa



IGI



September 26, 2024
IGI Report No. LG642465945
PRINCESS CUT
5.01 CARATS F
Carat Weight 5.01
Color Grade F
Clarity Grade VVS 2
Depth 71.7%
Table 55%
Girdle Medium
Culet Pointed
Polish EXCELLENT
Symmetry EXCELLENT
Fluorescence NONE
Inscription(s) IGI LG642465945
Comments: This Laboratory Grown Diamond was created by Chemical Vapor Deposition (CVD) growth process. Type IIa