



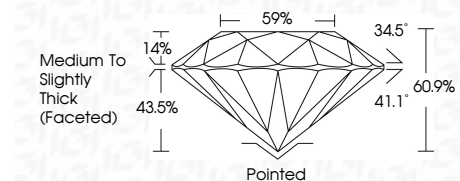
ELECTRONIC COPY

LG642470155
Report verification at igi.org



July 11, 2024
IGI Report Number LG642470155
Description LABORATORY GROWN DIAMOND
Shape and Cutting Style ROUND BRILLIANT
Measurements 7.53 - 7.56 X 4.60 MM

GRADING RESULTS
Carat Weight 1.60 CARAT
Color Grade H
Clarity Grade VVS 2
Cut Grade IDEAL



ADDITIONAL GRADING INFORMATION
Polish EXCELLENT
Symmetry EXCELLENT
Fluorescence NONE
Inscription(s) LG642470155
Comments: This Laboratory Grown Diamond was created by Chemical Vapor Deposition (CVD) growth process. Type IIa



July 11, 2024
IGI Report No LG642470155
ROUND BRILLIANT
7.53 - 7.56 X 4.60 MM
1.60 CARAT H
VVS 2 IDEAL
60.9%
Medium To Slightly Thick (Faceted)
Pointed EXCELLENT
EXCELLENT
NONE
IGI LG642470155
Comments: This Laboratory Grown Diamond was created by Chemical Vapor Deposition (CVD) growth process. Type IIa

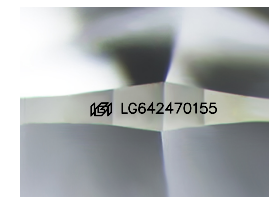
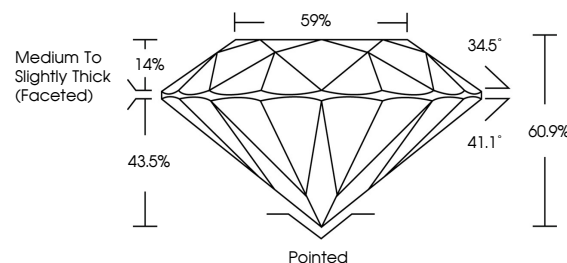
July 11, 2024
IGI Report Number LG642470155
Description LABORATORY GROWN DIAMOND
Shape and Cutting Style ROUND BRILLIANT
Measurements 7.53 - 7.56 X 4.60 MM

GRADING RESULTS
Carat Weight 1.60 CARAT
Color Grade H
Clarity Grade VVS 2
Cut Grade IDEAL

ADDITIONAL GRADING INFORMATION
Polish EXCELLENT
Symmetry EXCELLENT
Fluorescence NONE
Inscription(s) LG642470155

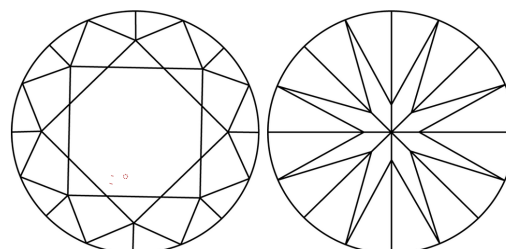
Comments: This Laboratory Grown Diamond was created by Chemical Vapor Deposition (CVD) growth process. Type IIa

PROPORTIONS



Sample Image Used

CLARITY CHARACTERISTICS



KEY TO SYMBOLS

Red symbols indicate internal characteristics.
Green symbols indicate external characteristics.

COLOR

D E F G H I J Faint Very Light Light

CLARITY

IF VVS 1-2 VS 1-2 SI 1-2 I 1-3
Internally Flawless Very Very Slightly Included Very Slightly Included Slightly Included Included

