



ELECTRONIC COPY

LG642470795
Report verification at igi.org



July 17, 2024
IGI Report Number LG642470795

Description LABORATORY GROWN DIAMOND

Shape and Cutting Style CUT CORNERED RECTANGULAR MODIFIED BRILLIANT

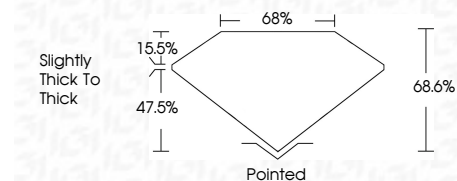
Measurements 7.18 X 4.74 X 3.25 MM

GRADING RESULTS

Carat Weight 1.00 CARAT

Color Grade G

Clarity Grade VVS 2



ADDITIONAL GRADING INFORMATION

Polish EXCELLENT

Symmetry EXCELLENT

Fluorescence NONE

Inscription(s) LG642470795

Comments: This Laboratory Grown Diamond was created by Chemical Vapor Deposition (CVD) growth process. Type IIa



Table with 2 columns: Property and Value. Includes: July 17, 2024, IGI Report No. LG642470795, CUT CORNERED RECT. MODIFIED BRILLIANT, 7.18 X 4.74 X 3.25 MM, Carat Weight 1.00 CARAT, Color Grade G, Clarity Grade VVS 2, Depth 68.6%, Table 65%, Girdle Slightly thick to thick, Culet Pointed, Polish EXCELLENT, Symmetry EXCELLENT, Fluorescence NONE, Inscription(s) LG642470795. Comments: This Laboratory Grown Diamond was created by Chemical Vapor Deposition (CVD) growth process. Type IIa

July 17, 2024

IGI Report Number LG642470795

Description LABORATORY GROWN DIAMOND

Shape and Cutting Style CUT CORNERED RECTANGULAR MODIFIED BRILLIANT

Measurements 7.18 X 4.74 X 3.25 MM

GRADING RESULTS

Carat Weight 1.00 CARAT

Color Grade G

Clarity Grade VVS 2

ADDITIONAL GRADING INFORMATION

Polish EXCELLENT

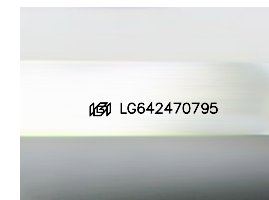
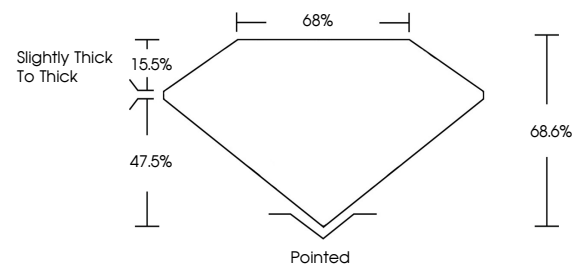
Symmetry EXCELLENT

Fluorescence NONE

Inscription(s) LG642470795

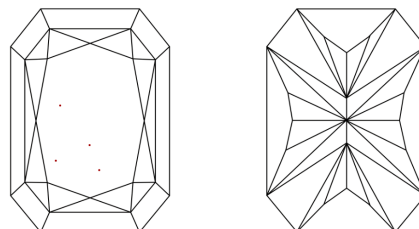
Comments: This Laboratory Grown Diamond was created by Chemical Vapor Deposition (CVD) growth process. Type IIa

PROPORTIONS



Sample Image Used

CLARITY CHARACTERISTICS



KEY TO SYMBOLS

Red symbols indicate internal characteristics. Green symbols indicate external characteristics.

COLOR

D E F G H I J Faint Very Light Light

CLARITY

Table with 5 columns: Clarity Grade, Internal Characteristics, External Characteristics, Clarity Grade, Internal Characteristics, External Characteristics. Rows: IF (Internally Flawless), VS 1-2 (Very Slightly Included), VS 1-2 (Very Slightly Included), SI 1-2 (Slightly Included), I 1-3 (Included)