



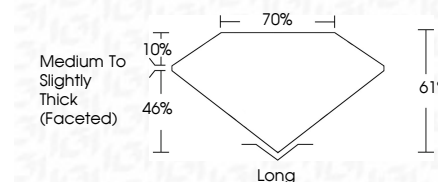
**ELECTRONIC COPY**

LG642471556  
Report verification at igi.org



July 8, 2024  
IGI Report Number **LG642471556**  
Description **LABORATORY GROWN DIAMOND**  
Shape and Cutting Style **CUSHION MIXED CUT**  
Measurements **10.61 X 6.48 X 3.95 MM**

**GRADING RESULTS**  
Carat Weight **2.44 CARATS**  
Color Grade **G**  
Clarity Grade **VS 2**



**ADDITIONAL GRADING INFORMATION**  
Polish **EXCELLENT**  
Symmetry **EXCELLENT**  
Fluorescence **NONE**  
Inscription(s) **IGI LG642471556**  
Comments: This Laboratory Grown Diamond was created by Chemical Vapor Deposition (CVD) growth process. Type IIa



July 8, 2024  
IGI Report No LG642471556  
**CUSHION MIXED CUT**  
10.61 X 6.48 X 3.95 MM  
2.44 CARATS  
G  
VS 2  
61%  
70%  
Medium to Slightly Thick (Faceted)  
Long  
EXCELLENT  
EXCELLENT  
NONE  
IGI LG642471556  
Comments: This Laboratory Grown Diamond was created by Chemical Vapor Deposition (CVD) growth process. Type IIa

**LABORATORY GROWN DIAMOND REPORT**

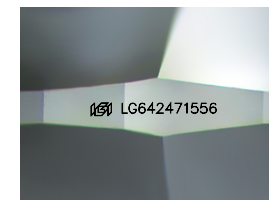
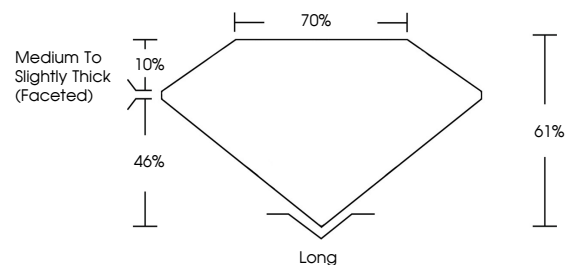
July 8, 2024  
IGI Report Number **LG642471556**  
Description **LABORATORY GROWN DIAMOND**  
Shape and Cutting Style **CUSHION MIXED CUT**  
Measurements **10.61 X 6.48 X 3.95 MM**

**GRADING RESULTS**  
Carat Weight **2.44 CARATS**  
Color Grade **G**  
Clarity Grade **VS 2**

**ADDITIONAL GRADING INFORMATION**  
Polish **EXCELLENT**  
Symmetry **EXCELLENT**  
Fluorescence **NONE**  
Inscription(s) **IGI LG642471556**

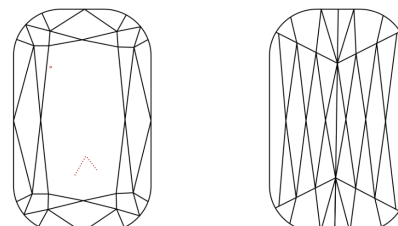
Comments: This Laboratory Grown Diamond was created by Chemical Vapor Deposition (CVD) growth process. Type IIa

**PROPORTIONS**



Sample Image Used

**CLARITY CHARACTERISTICS**



**KEY TO SYMBOLS**

Red symbols indicate internal characteristics.  
Green symbols indicate external characteristics.

**COLOR**

D E F G H I J Faint Very Light Light

**CLARITY**

IF	VS <sup>1-2</sup>	VS <sup>1-2</sup>	SI <sup>1-2</sup>	I <sup>1-3</sup>
Internally Flawless	Very Very Slightly Included	Very Slightly Included	Slightly Included	Included

