



ELECTRONIC COPY

LG642472721
Report verification at igi.org



July 10, 2024
IGI Report Number LG642472721
Description LABORATORY GROWN DIAMOND
Shape and Cutting Style ROUND BRILLIANT
Measurements 6.91 - 6.93 X 4.16 MM
GRADING RESULTS
Carat Weight 1.21 CARAT
Color Grade G
Clarity Grade VVS 1
Cut Grade IDEAL

LABORATORY GROWN DIAMOND REPORT

July 10, 2024
IGI Report Number LG642472721
Description LABORATORY GROWN DIAMOND
Shape and Cutting Style ROUND BRILLIANT
Measurements 6.91 - 6.93 X 4.16 MM

GRADING RESULTS

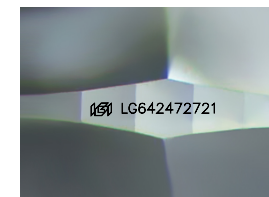
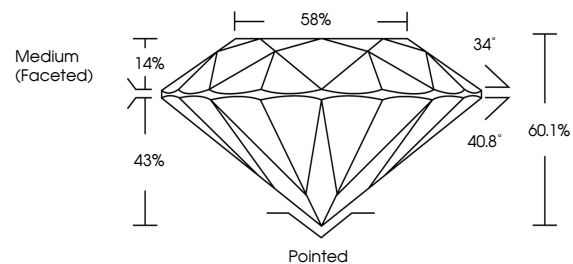
Carat Weight 1.21 CARAT
Color Grade G
Clarity Grade VVS 1
Cut Grade IDEAL

ADDITIONAL GRADING INFORMATION

Polish EXCELLENT
Symmetry EXCELLENT
Fluorescence NONE
Inscription(s) IGI LG642472721

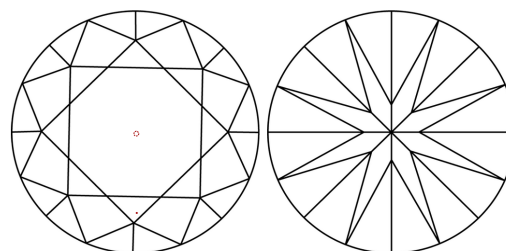
Comments: This Laboratory Grown Diamond was created by Chemical Vapor Deposition (CVD) growth process. Type IIa

PROPORTIONS



Sample Image Used

CLARITY CHARACTERISTICS



KEY TO SYMBOLS

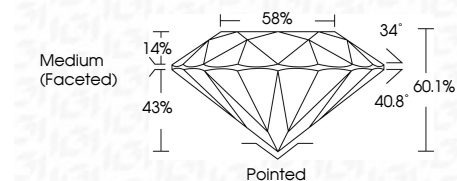
Red symbols indicate internal characteristics.
Green symbols indicate external characteristics.

COLOR

D E F G H I J Faint Very Light Light

CLARITY

IF VVS 1-2 VS 1-2 SI 1-2 I 1-3
Internally Flawless Very Very Slightly Included Very Slightly Included Slightly Included Included



ADDITIONAL GRADING INFORMATION

Polish EXCELLENT
Symmetry EXCELLENT
Fluorescence NONE
Inscription(s) IGI LG642472721
Comments: This Laboratory Grown Diamond was created by Chemical Vapor Deposition (CVD) growth process. Type IIa



July 10, 2024
IGI Report No LG642472721
ROUND BRILLIANT
6.91 - 6.93 X 4.16 MM
1.21 CARAT
Color Grade G
Clarity Grade VVS 1
Cut Grade IDEAL
Depth 60.1%
Table 58%
Medium (Faceted)
Culet Pointed
Polish EXCELLENT
Symmetry EXCELLENT
Fluorescence NONE
Inscription(s) IGI LG642472721
Comments: This Laboratory Grown Diamond was created by Chemical Vapor Deposition (CVD) growth process. Type IIa