



ELECTRONIC COPY

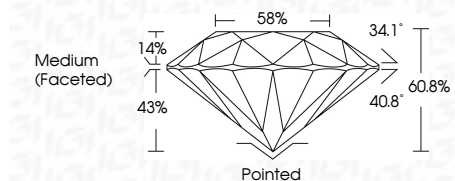
LG642476133
Report verification at igi.org



July 9, 2024
IGI Report Number LG642476133
Description LABORATORY GROWN DIAMOND
Shape and Cutting Style ROUND BRILLIANT
Measurements 8.39 - 8.43 X 5.11 MM

GRADING RESULTS

Carat Weight 2.21 CARATS
Color Grade F
Clarity Grade VS 1
Cut Grade IDEAL



ADDITIONAL GRADING INFORMATION

Polish VERY GOOD
Symmetry EXCELLENT
Fluorescence NONE
Inscription(s) IGI LG642476133
Comments: This Laboratory Grown Diamond was created by Chemical Vapor Deposition (CVD) growth process. Type IIa



Summary table with columns: July 9, 2024, IGI Report No LG642476133, ROUND BRILLIANT, 8.39 - 8.43 X 5.11 MM, 2.21 CARATS, F, VS 1, IDEAL, 60.8%, 58%, Medium (Faceted), Pointed, VERY GOOD, EXCELLENT, NONE, IGI LG642476133. Includes a comment about CVD growth process.

July 9, 2024
IGI Report Number LG642476133
Description LABORATORY GROWN DIAMOND
Shape and Cutting Style ROUND BRILLIANT
Measurements 8.39 - 8.43 X 5.11 MM

GRADING RESULTS

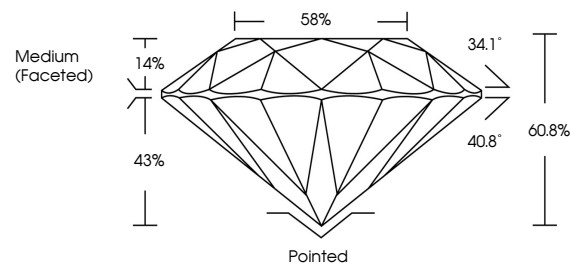
Carat Weight 2.21 CARATS
Color Grade F
Clarity Grade VS 1
Cut Grade IDEAL

ADDITIONAL GRADING INFORMATION

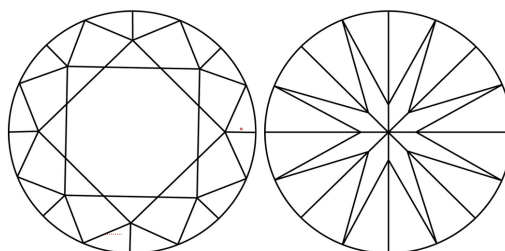
Polish VERY GOOD
Symmetry EXCELLENT
Fluorescence NONE
Inscription(s) IGI LG642476133

Comments: This Laboratory Grown Diamond was created by Chemical Vapor Deposition (CVD) growth process. Type IIa

PROPORTIONS

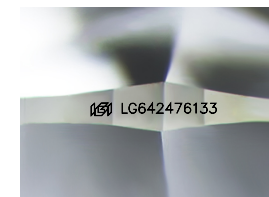


CLARITY CHARACTERISTICS



KEY TO SYMBOLS

Red symbols indicate internal characteristics.
Green symbols indicate external characteristics.



Sample Image Used

COLOR

D E F G H I J Faint Very Light Light

CLARITY

Table with columns: IF, VS 1-2, VS 1-2, SI 1-2, I 1-3. Rows: Internally Flawless, Very Very Slightly Included, Very Slightly Included, Slightly Included, Included

