



ELECTRONIC COPY

LG642476900
Report verification at igi.org

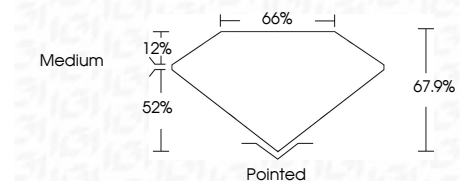


July 12, 2024
IGI Report Number LG642476900
Description LABORATORY GROWN DIAMOND
Shape and Cutting Style CUT CORNERED RECTANGULAR MODIFIED BRILLIANT

Measurements 8.30 X 5.67 X 3.85 MM

GRADING RESULTS

Carat Weight 1.57 CARAT
Color Grade F
Clarity Grade VS 1



ADDITIONAL GRADING INFORMATION

Polish EXCELLENT
Symmetry EXCELLENT
Fluorescence NONE
Inscription(s) LG642476900

Comments: This Laboratory Grown Diamond was created by Chemical Vapor Deposition (CVD) growth process. Type IIa



July 12, 2024
IGI Report No LG642476900
CUT CORNERED RECT. MODIFIED BRILLIANT
8.30 X 5.67 X 3.85 MM
1.57 CARAT
F
VS 1
67.9%
52%
Medium
Pointed
EXCELLENT
EXCELLENT
NONE
IGI LG642476900
Comments: This Laboratory Grown Diamond was created by Chemical Vapor Deposition (CVD) growth process. Type IIa

LABORATORY GROWN DIAMOND REPORT

July 12, 2024
IGI Report Number LG642476900
Description LABORATORY GROWN DIAMOND
Shape and Cutting Style CUT CORNERED RECTANGULAR MODIFIED BRILLIANT
Measurements 8.30 X 5.67 X 3.85 MM

GRADING RESULTS

Carat Weight 1.57 CARAT
Color Grade F
Clarity Grade VS 1

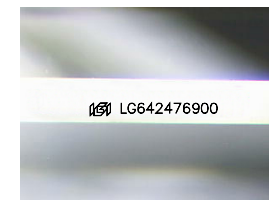
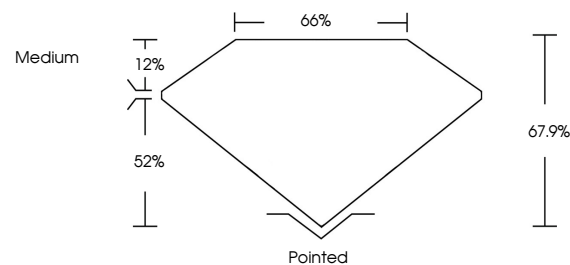
ADDITIONAL GRADING INFORMATION

Polish EXCELLENT
Symmetry EXCELLENT
Fluorescence NONE

Inscription(s) LG642476900

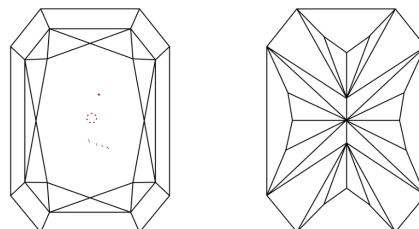
Comments: This Laboratory Grown Diamond was created by Chemical Vapor Deposition (CVD) growth process. Type IIa

PROPORTIONS



Sample Image Used

CLARITY CHARACTERISTICS



KEY TO SYMBOLS

Red symbols indicate internal characteristics.
Green symbols indicate external characteristics.

COLOR

D E F G H I J Faint Very Light Light

CLARITY

IF VS 1-2 VS 1-2 SI 1-2 I 1-3
Internally Flawless Very Very Slightly Included Very Slightly Included Slightly Included Included

