



ELECTRONIC COPY

LABORATORY GROWN DIAMOND REPORT

July 10, 2024
IGI Report Number LG642478059
Description LABORATORY GROWN DIAMOND
Shape and Cutting Style PRINCESS CUT
Measurements 6.04 X 5.92 X 4.41 MM

GRADING RESULTS

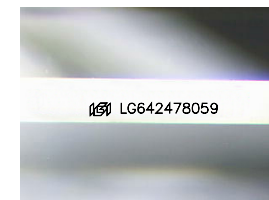
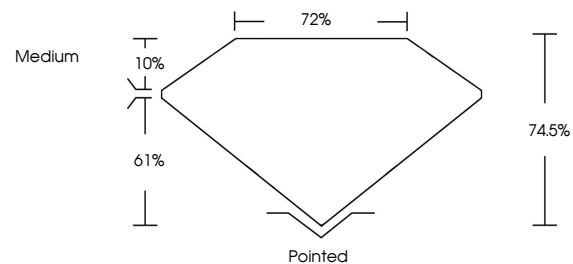
Carat Weight 1.36 CARAT
Color Grade E
Clarity Grade VS 1

ADDITIONAL GRADING INFORMATION

Polish EXCELLENT
Symmetry EXCELLENT
Fluorescence NONE
Inscription(s) LG642478059

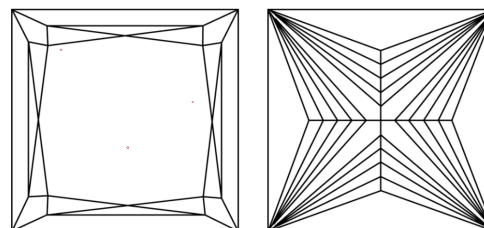
Comments: This Laboratory Grown Diamond was created by Chemical Vapor Deposition (CVD) growth process. Type IIa

PROPORTIONS



Sample Image Used

CLARITY CHARACTERISTICS



KEY TO SYMBOLS

Red symbols indicate internal characteristics.
Green symbols indicate external characteristics.

COLOR

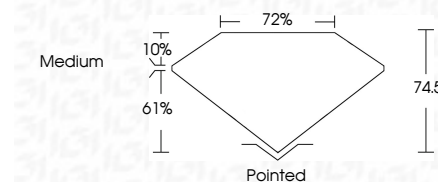
Color scale from D to J, with 'Faint', 'Very Light', and 'Light' labels.

CLARITY

Clarity scale from IF to I1-3, with 'Internally Flawless', 'Very Very Slightly Included', 'Very Slightly Included', 'Slightly Included', and 'Included' labels.



July 10, 2024
IGI Report Number LG642478059
Description LABORATORY GROWN DIAMOND
Shape and Cutting Style PRINCESS CUT
Measurements 6.04 X 5.92 X 4.41 MM
GRADING RESULTS
Carat Weight 1.36 CARAT
Color Grade E
Clarity Grade VS 1



ADDITIONAL GRADING INFORMATION

Polish EXCELLENT
Symmetry EXCELLENT
Fluorescence NONE
Inscription(s) LG642478059
Comments: This Laboratory Grown Diamond was created by Chemical Vapor Deposition (CVD) growth process. Type IIa



IGI



July 10, 2024
IGI Report No. LG642478059
PRINCESS CUT
6.04 X 5.92 X 4.41 MM
1.36 CARAT E
Color Grade VS 1
Depth 74.5%
Table 72%
Girdle Medium
Pointed
Polish EXCELLENT
Symmetry EXCELLENT
Fluorescence NONE
Inscription(s) LG642478059
Comments: This Laboratory Grown Diamond was created by Chemical Vapor Deposition (CVD) growth process. Type IIa