



ELECTRONIC COPY

LG642480815
Report verification at igi.org



July 13, 2024
IGI Report Number **LG642480815**
Description **LABORATORY GROWN DIAMOND**
Shape and Cutting Style **ROUND BRILLIANT**
Measurements **9.24 - 9.27 X 5.48 MM**
GRADING RESULTS
Carat Weight **2.90 CARATS**
Color Grade **FANCY BROWNISH PINK**
Clarity Grade **VS 2**
Cut Grade **IDEAL**

July 13, 2024
IGI Report Number **LG642480815**
Description **LABORATORY GROWN DIAMOND**
Shape and Cutting Style **ROUND BRILLIANT**
Measurements **9.24 - 9.27 X 5.48 MM**

GRADING RESULTS

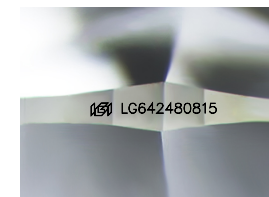
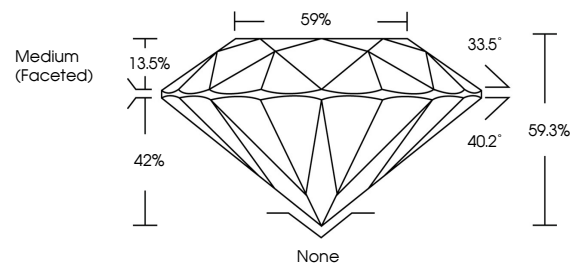
Carat Weight **2.90 CARATS**
Color Grade **FANCY BROWNISH PINK**
Clarity Grade **VS 2**
Cut Grade **IDEAL**

ADDITIONAL GRADING INFORMATION

Polish **EXCELLENT**
Symmetry **EXCELLENT**
Fluorescence **SLIGHT**
Inscription(s) **IGI LG642480815**

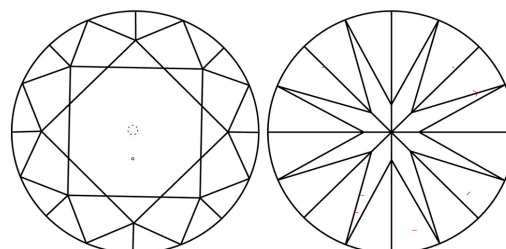
Comments: This Laboratory Grown Diamond was created by Chemical Vapor Deposition (CVD) growth process.
Indications of post-growth treatment.

PROPORTIONS



Sample Image Used

CLARITY CHARACTERISTICS



KEY TO SYMBOLS

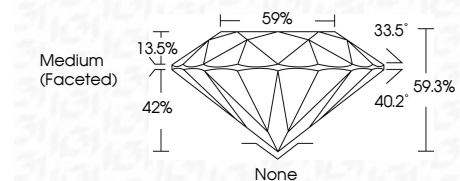
Red symbols indicate internal characteristics.
Green symbols indicate external characteristics.

COLOR

D E F G H I J Faint Very Light Light

CLARITY

IF	VS ¹⁻²	VS ¹⁻²	SI ¹⁻²	I ¹⁻³
Internally Flawless	Very Very Slightly Included	Very Slightly Included	Slightly Included	Included



ADDITIONAL GRADING INFORMATION

Polish **EXCELLENT**
Symmetry **EXCELLENT**
Fluorescence **SLIGHT**
Inscription(s) **IGI LG642480815**
Comments: This Laboratory Grown Diamond was created by Chemical Vapor Deposition (CVD) growth process.
Indications of post-growth treatment.



July 13, 2024
IGI Report No **LG642480815**
ROUND BRILLIANT
2.90 CARATS
Carat Weight **FANCY BROWNISH PINK**
Color Grade **VS 2**
Clarity Grade **IDEAL**
Depth **59.3%**
Table **59%**
Girdle **Medium (Faceted)**
None
Culet **EXCELLENT**
Polish **EXCELLENT**
Symmetry **EXCELLENT**
Fluorescence **SLIGHT**
Inscriptions(s) **IGI LG642480815**
Comments: This Laboratory Grown Diamond was created by Chemical Vapor Deposition (CVD) growth process.
Indications of post-growth treatment.