



ELECTRONIC COPY

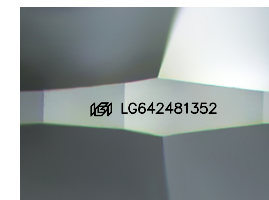
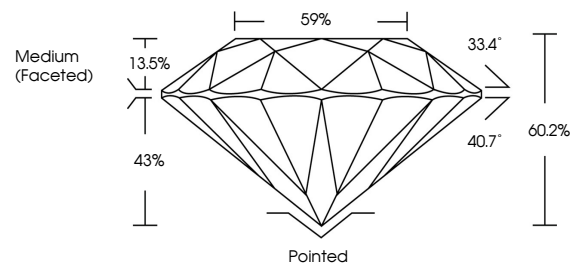
LG642481352
Report verification at igi.org



July 13, 2024
IGI Report Number LG642481352
Description LABORATORY GROWN DIAMOND
Shape and Cutting Style ROUND BRILLIANT
Measurements 8.45 - 8.50 X 5.10 MM
GRADING RESULTS
Carat Weight 2.25 CARATS
Color Grade E
Clarity Grade VS 1
Cut Grade IDEAL

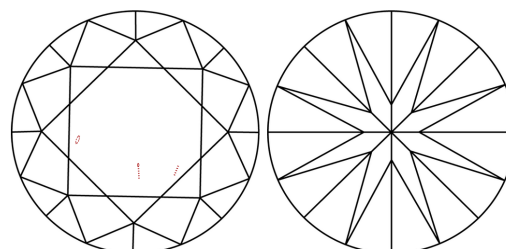
July 13, 2024
IGI Report Number LG642481352
Description LABORATORY GROWN DIAMOND
Shape and Cutting Style ROUND BRILLIANT
Measurements 8.45 - 8.50 X 5.10 MM

PROPORTIONS



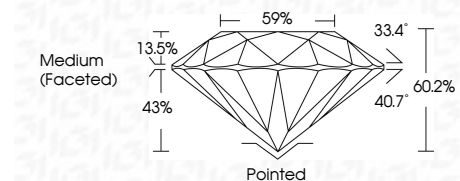
Sample Image Used

CLARITY CHARACTERISTICS



KEY TO SYMBOLS

Red symbols indicate internal characteristics.
Green symbols indicate external characteristics.



ADDITIONAL GRADING INFORMATION

Polish EXCELLENT
Symmetry EXCELLENT
Fluorescence NONE
Inscription(s) IGI LG642481352
Comments: This Laboratory Grown Diamond was created by Chemical Vapor Deposition (CVD) growth process. Type IIa

GRADING RESULTS

Carat Weight 2.25 CARATS
Color Grade E
Clarity Grade VS 1
Cut Grade IDEAL

ADDITIONAL GRADING INFORMATION

Polish EXCELLENT
Symmetry EXCELLENT
Fluorescence NONE
Inscription(s) IGI LG642481352

Comments: This Laboratory Grown Diamond was created by Chemical Vapor Deposition (CVD) growth process. Type IIa

COLOR

D E F G H I J Faint Very Light Light

CLARITY

IF VS 1-2 VS 1-2 SI 1-2 I 1-3
Internally Flawless Very Very Slightly Included Very Slightly Included Slightly Included Included



IGI



Summary table with columns for Date, Report No, Shape, Measurements, Carat Weight, Color Grade, Clarity Grade, Depth, Table, Grade, Cut, Polish, Symmetry, Fluorescence, Inscription(s), and Comments.