



ELECTRONIC COPY

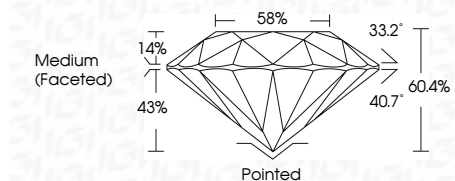
LG642482493
Report verification at igi.org



July 10, 2024
IGI Report Number LG642482493
Description LABORATORY GROWN DIAMOND
Shape and Cutting Style ROUND BRILLIANT
Measurements 8.23 - 8.27 X 4.98 MM

GRADING RESULTS

Carat Weight 2.07 CARATS
Color Grade G
Clarity Grade VVS 2
Cut Grade IDEAL



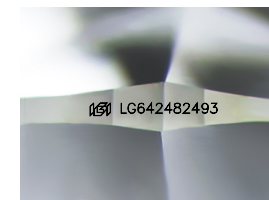
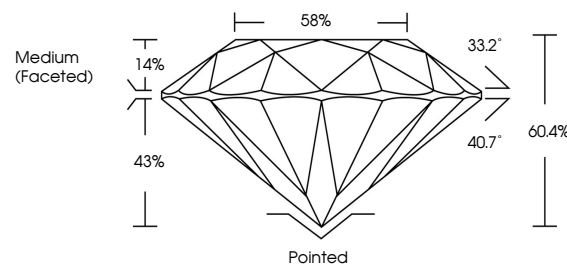
ADDITIONAL GRADING INFORMATION

Polish EXCELLENT
Symmetry EXCELLENT
Fluorescence NONE
Inscription(s) IGI LG642482493
Comments: This Laboratory Grown Diamond was created by Chemical Vapor Deposition (CVD) growth process. Type IIa



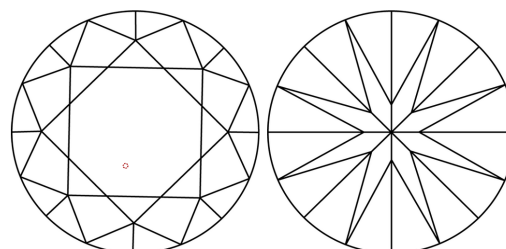
Summary table of diamond characteristics: July 10, 2024, IGI Report No. LG642482493, ROUND BRILLIANT, 8.23 - 8.27 X 4.98 MM, 2.07 CARATS, G, VVS 2, IDEAL, 60.4%, 58%, Medium (Faceted), Polished EXCELLENT, Symmetry EXCELLENT, Fluorescence NONE, Inscription(s) IGI LG642482493. Comments: This Laboratory Grown Diamond was created by Chemical Vapor Deposition (CVD) growth process. Type IIa

PROPORTIONS



Sample Image Used

CLARITY CHARACTERISTICS



KEY TO SYMBOLS

Red symbols indicate internal characteristics.
Green symbols indicate external characteristics.

COLOR

D E F G H I J Faint Very Light Light

CLARITY

IF VVS 1-2 VS 1-2 SI 1-2 I 1-3
Internally Flawless Very Very Slightly Included Very Slightly Included Slightly Included Included