



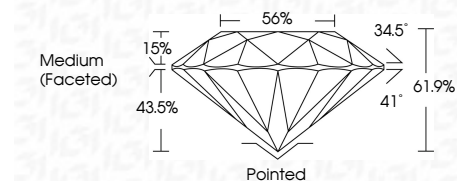
ELECTRONIC COPY

LG642482531
Report verification at igi.org



July 11, 2024
IGI Report Number LG642482531
Description LABORATORY GROWN DIAMOND
Shape and Cutting Style ROUND BRILLIANT
Measurements 8.20 - 8.23 X 5.09 MM

GRADING RESULTS
Carat Weight 2.10 CARATS
Color Grade G
Clarity Grade VS 2
Cut Grade IDEAL

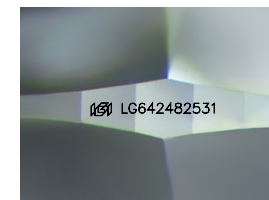


ADDITIONAL GRADING INFORMATION
Polish EXCELLENT
Symmetry EXCELLENT
Fluorescence NONE
Inscription(s) IGI LG642482531
Comments: This Laboratory Grown Diamond was created by Chemical Vapor Deposition (CVD) growth process. Type IIa



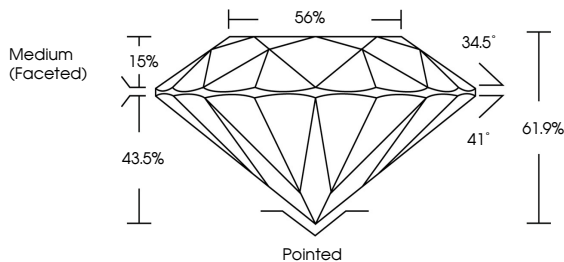
Table with 2 columns: Property and Value. Includes Carat Weight (2.10 CARATS), Color Grade (G), Clarity Grade (VS 2), Cut Grade (IDEAL), and other grading details.

July 11, 2024
IGI Report No. LG642482531
ROUND BRILLIANT
8.20 - 8.23 X 5.09 MM
2.10 CARATS
G
VS 2
IDEAL
61.9%
56%
Medium (Faceted)
Pointed
EXCELLENT
EXCELLENT
NONE
IGI LG642482531
Comments: This Laboratory Grown Diamond was created by Chemical Vapor Deposition (CVD) growth process. Type IIa

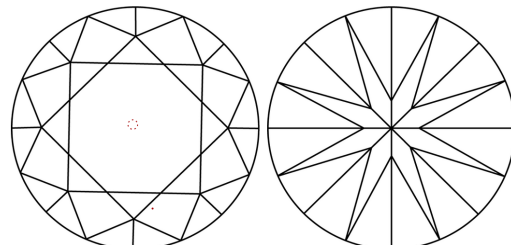


Sample Image Used

PROPORTIONS



CLARITY CHARACTERISTICS



KEY TO SYMBOLS
Red symbols indicate internal characteristics.
Green symbols indicate external characteristics.

COLOR

Color scale table with categories: D, E, F, G, H, I, J, Faint, Very Light, Light

CLARITY

Clarity scale table with categories: IF, VVS 1-2, VS 1-2, SI 1-2, I 1-3, Internally Flawless, Very Very Slightly Included, Very Slightly Included, Slightly Included, Included

