



Light Performance Grade: Exceptional



Ideal-Scope representation

Low Moderate High Superior Exceptional

Light Performance



GRADING SCALES

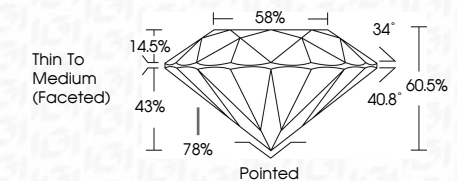
CLARITY

Table with 5 columns: IF, VS 1-2, VS 1-2, SI 1-2, I 1-3. Rows: Internally Flawless, Very Very Slightly Included, Very Slightly Included, Slightly Included, Included.

COLOR

Table with 5 columns: D, E, F, G, H, I, J, Faint, Very Light, Light.

July 9, 2024
IGI Report Number: LG642483648
Description: LABORATORY GROWN DIAMOND
Shape and Cutting Style: ROUND BRILLIANT
Measurements: 8.53 - 8.61 X 5.18 MM
GRADING RESULTS
Carat Weight: 2.29 CARATS
Color Grade: D
Clarity Grade: VS 1
Cut Grade: IDEAL

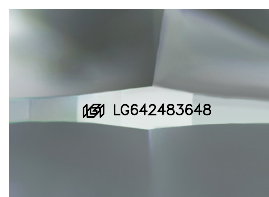
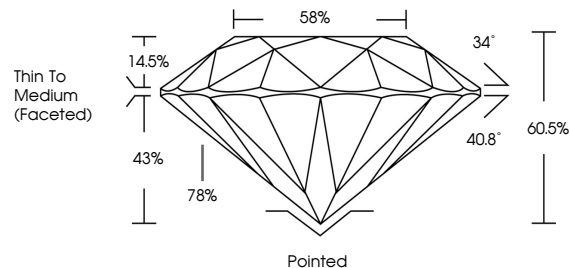


ADDITIONAL GRADING INFORMATION
Polish: EXCELLENT
Symmetry: EXCELLENT
Fluorescence: NONE
Inscription(s): IGI LG642483648
Comments: HEARTS & ARROWS
This Laboratory Grown Diamond was created by Chemical Vapor Deposition (CVD) growth process. Type IIa



July 9, 2024
IGI Report No LG642483648
ROUND BRILLIANT
8.53 - 8.61 X 5.18 MM
Carat Weight: 2.29 CARATS
Color Grade: D
Clarity Grade: VS 1
Cut Grade: IDEAL
Depth: 60.5%
Table: 58%
Girdle: Thin To Medium (Faceted)
Culet: Pointed
Polish: EXCELLENT
Symmetry: EXCELLENT
Fluorescence: NONE
Inscription(s): IGI LG642483648
Comments: HEARTS & ARROWS
This Laboratory Grown Diamond was created by Chemical Vapor Deposition (CVD) growth process. Type IIa

PROPORTIONS



Sample Image Used

