



**ELECTRONIC COPY**

LG642491342  
Report verification at igi.org



July 11, 2024  
IGI Report Number **LG642491342**  
Description **LABORATORY GROWN DIAMOND**  
Shape and Cutting Style **CUT CORNERED SQUARE  
MODIFIED BRILLIANT**  
Measurements **8.31 X 8.26 X 5.49 MM**  
**GRADING RESULTS**  
Carat Weight **3.76 CARATS**  
Color Grade **E**  
Clarity Grade **VVS 2**

**LABORATORY GROWN DIAMOND REPORT**

July 11, 2024  
IGI Report Number **LG642491342**  
Description **LABORATORY GROWN DIAMOND**  
Shape and Cutting Style **CUT CORNERED SQUARE  
MODIFIED BRILLIANT**  
Measurements **8.31 X 8.26 X 5.49 MM**

**GRADING RESULTS**

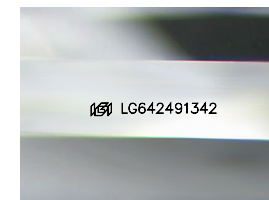
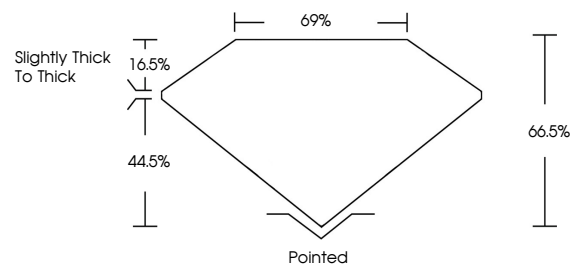
Carat Weight **3.76 CARATS**  
Color Grade **E**  
Clarity Grade **VVS 2**

**ADDITIONAL GRADING INFORMATION**

Polish **EXCELLENT**  
Symmetry **EXCELLENT**  
Fluorescence **NONE**  
Inscription(s) **IGI LG642491342**

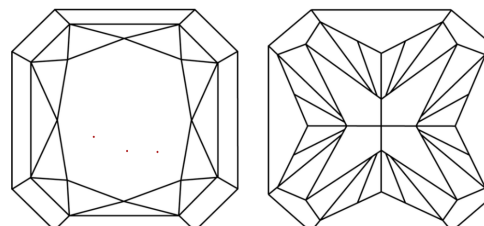
Comments: This Laboratory Grown Diamond was created by Chemical Vapor Deposition (CVD) growth process.  
Type IIa

**PROPORTIONS**



Sample Image Used

**CLARITY CHARACTERISTICS**



**KEY TO SYMBOLS**

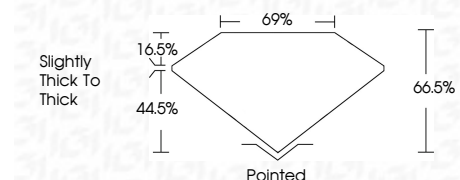
Red symbols indicate internal characteristics.  
Green symbols indicate external characteristics.

**COLOR**

D E F G H I J Faint Very Light Light

**CLARITY**

IF	VS <sup>1-2</sup>	VS <sup>1-2</sup>	SI <sup>1-2</sup>	I <sup>1-3</sup>
Internally Flawless	Very Very Slightly Included	Very Slightly Included	Slightly Included	Included



**ADDITIONAL GRADING INFORMATION**

Polish **EXCELLENT**  
Symmetry **EXCELLENT**  
Fluorescence **NONE**  
Inscription(s) **IGI LG642491342**  
Comments: This Laboratory Grown Diamond was created by Chemical Vapor Deposition (CVD) growth process.  
Type IIa



**IGI**



July 11, 2024  
IGI Report No. **LG642491342**  
**CUT CORNERED SQUARE MODIFIED BRILLIANT**  
**8.31 X 8.26 X 5.49 MM**  
Carat Weight **3.76 CARATS**  
Color Grade **E**  
Clarity Grade **VVS 2**  
Depth **66.5%**  
Table **69%**  
Girdle **Slightly Thick To Thick**  
Culet **Pointed**  
Polish **EXCELLENT**  
Symmetry **EXCELLENT**  
Fluorescence **NONE**  
Inscription(s) **IGI LG642491342**

Comments: This Laboratory Grown Diamond was created by Chemical Vapor Deposition (CVD) growth process.  
Type IIa