



**INTERNATIONAL
GEMOLOGICAL
INSTITUTE**

LABORATORY GROWN DIAMOND REPORT

July 15, 2024
 IGI Report Number **LG642491353**
 Description **LABORATORY GROWN DIAMOND**
 Shape and Cutting Style **ROUND BRILLIANT**
 Measurements **5.71 - 5.74 X 3.53 MM**

GRADING RESULTS

Carat Weight **0.72 CARAT**
 Color Grade **FANCY VIVID GREEN**
 Clarity Grade **VVS 2**
 Cut Grade **IDEAL**

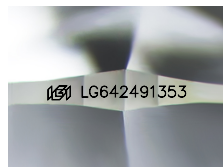
ADDITIONAL GRADING INFORMATION

Polish **EXCELLENT**
 Symmetry **EXCELLENT**
 Fluorescence **NONE**
 Inscription(s) **IGI LG642491353**

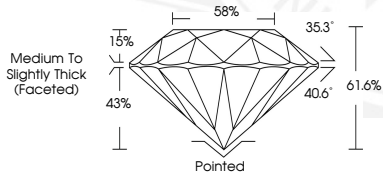
Comments: This Laboratory Grown Diamond was created by High Pressure High Temperature (HPHT) growth process. Indications of post-growth treatment.

ELECTRONIC COPY

LG642491353



Sample Image Used



July 15, 2024
 IGI Report Number **LG642491353**
 ROUND BRILLIANT
 LABORATORY GROWN DIAMOND
 5.71 - 5.74 X 3.53 MM
 Carat Weight **0.72 CARAT**
 Color Grade **FANCY VIVID GREEN**
 Clarity Grade **VVS 2**
 Cut Grade **IDEAL**
 Polish **EXCELLENT**
 Symmetry **EXCELLENT**
 Fluorescence **NONE**
 Inscription(s) **IGI LG642491353**

Comments: This Laboratory Grown Diamond was created by High Pressure High Temperature (HPHT) growth process. Indications of post-growth treatment.



July 15, 2024
 IGI Report Number **LG642491353**
 ROUND BRILLIANT
 LABORATORY GROWN DIAMOND
 5.71 - 5.74 X 3.53 MM
 Carat Weight **0.72 CARAT**
 Color Grade **FANCY VIVID GREEN**
 Clarity Grade **VVS 2**
 Cut Grade **IDEAL**
 Polish **EXCELLENT**
 Symmetry **EXCELLENT**
 Fluorescence **NONE**
 Inscription(s) **IGI LG642491353**

Comments: This Laboratory Grown Diamond was created by High Pressure High Temperature (HPHT) growth process. Indications of post-growth treatment.

THIS DOCUMENT WAS PRODUCED WITH THE FOLLOWING SECURITY MEASURES: SPECIAL DOCUMENT PAPER, INK SCREENS, WATERMARK, BACKGROUND DESIGN, HOLOGRAM AND OTHER SECURITY FEATURES NOT LISTED AND DO EXCEED DOCUMENT SECURITY INDUSTRY GUIDELINES.

For terms & conditions and to verify this report, please visit www.igi.org