



**INTERNATIONAL  
GEMOLOGICAL  
INSTITUTE**

**LABORATORY GROWN DIAMOND REPORT**

July 15, 2024  
 IGI Report Number **LG642491365**  
 Description **LABORATORY GROWN DIAMOND**  
 Shape and Cutting Style **ROUND BRILLIANT**  
 Measurements **6.01 - 6.03 X 3.64 MM**

**GRADING RESULTS**

Carat Weight **0.80 CARAT**  
 Color Grade **FANCY VIVID GREEN**  
 Clarity Grade **VS 1**  
 Cut Grade **IDEAL**

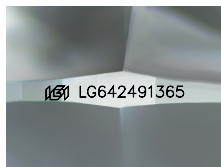
**ADDITIONAL GRADING INFORMATION**

Polish **EXCELLENT**  
 Symmetry **EXCELLENT**  
 Fluorescence **VERY SLIGHT**  
 Inscription(s) **IGI LG642491365**

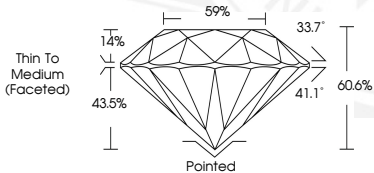
Comments: This Laboratory Grown Diamond was created by High Pressure High Temperature (HPHT) growth process. Indications of post-growth treatment.

**ELECTRONIC COPY**

**LG642491365**



Sample Image Used



July 15, 2024  
 IGI Report Number **LG642491365**  
 ROUND BRILLIANT  
 LABORATORY GROWN DIAMOND  
 6.01 - 6.03 X 3.64 MM  
 Carat Weight **0.80 CARAT**  
 Color Grade **FANCY VIVID GREEN**  
 Clarity Grade **VS 1**  
 Cut Grade **IDEAL**  
 Polish **EXCELLENT**  
 Symmetry **EXCELLENT**  
 Fluorescence **VERY SLIGHT**  
 Inscription(s) **IGI LG642491365**

Comments: This Laboratory Grown Diamond was created by High Pressure High Temperature (HPHT) growth process. Indications of post-growth treatment.



July 15, 2024  
 IGI Report Number **LG642491365**  
 ROUND BRILLIANT  
 LABORATORY GROWN DIAMOND  
 6.01 - 6.03 X 3.64 MM  
 Carat Weight **0.80 CARAT**  
 Color Grade **FANCY VIVID GREEN**  
 Clarity Grade **VS 1**  
 Cut Grade **IDEAL**  
 Polish **EXCELLENT**  
 Symmetry **EXCELLENT**  
 Fluorescence **VERY SLIGHT**  
 Inscription(s) **IGI LG642491365**

Comments: This Laboratory Grown Diamond was created by High Pressure High Temperature (HPHT) growth process. Indications of post-growth treatment.

THIS DOCUMENT WAS PRODUCED WITH THE FOLLOWING SECURITY MEASURES: SPECIAL DOCUMENT PAPER, INK SCREENS, WATERMARK, BACKGROUND DESIGN, HOLOGRAM AND OTHER SECURITY FEATURES NOT LISTED AND DO EXCEED DOCUMENT SECURITY INDUSTRY GUIDELINES.

For terms & conditions and to verify this report, please visit [www.igi.org](http://www.igi.org)