



**INTERNATIONAL
GEMOLOGICAL
INSTITUTE**

ELECTRONIC COPY

LG642491368

LABORATORY GROWN DIAMOND REPORT

July 15, 2024
 IGI Report Number **LG642491368**
 Description **LABORATORY GROWN DIAMOND**
 Shape and Cutting Style **ROUND BRILLIANT**
 Measurements **5.92 - 5.96 X 3.70 MM**

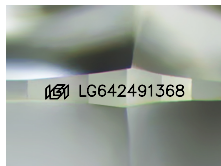
GRADING RESULTS

Carat Weight **0.81 CARAT**
 Color Grade **FANCY VIVID GREEN**
 Clarity Grade **VS 1**
 Cut Grade **IDEAL**

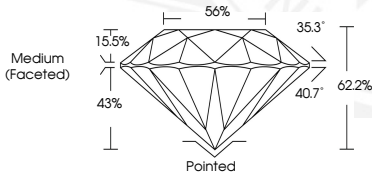
ADDITIONAL GRADING INFORMATION

Polish **EXCELLENT**
 Symmetry **EXCELLENT**
 Fluorescence **VERY SLIGHT**
 Inscription(s) **IGI LG642491368**

Comments: This Laboratory Grown Diamond was created by High Pressure High Temperature (HPHT) growth process. Indications of post-growth treatment.



Sample Image Used



July 15, 2024
 IGI Report Number **LG642491368**
 ROUND BRILLIANT
 LABORATORY GROWN DIAMOND
 5.92 - 5.96 X 3.70 MM
 Carat Weight **0.81 CARAT**
 Color Grade **FANCY VIVID GREEN**
 Clarity Grade **VS 1**
 Cut Grade **IDEAL**
 Polish **EXCELLENT**
 Symmetry **EXCELLENT**
 Fluorescence **VERY SLIGHT**
 Inscription(s) **IGI LG642491368**

Comments: This Laboratory Grown Diamond was created by High Pressure High Temperature (HPHT) growth process. Indications of post-growth treatment.



July 15, 2024
 IGI Report Number **LG642491368**
 ROUND BRILLIANT
 LABORATORY GROWN DIAMOND
 5.92 - 5.96 X 3.70 MM
 Carat Weight **0.81 CARAT**
 Color Grade **FANCY VIVID GREEN**
 Clarity Grade **VS 1**
 Cut Grade **IDEAL**
 Polish **EXCELLENT**
 Symmetry **EXCELLENT**
 Fluorescence **VERY SLIGHT**
 Inscription(s) **IGI LG642491368**

Comments: This Laboratory Grown Diamond was created by High Pressure High Temperature (HPHT) growth process. Indications of post-growth treatment.

THIS DOCUMENT WAS PRODUCED WITH THE FOLLOWING SECURITY MEASURES: SPECIAL DOCUMENT PAPER, INK SCREENS, WATERMARK, BACKGROUND DESIGNS, HOLOGRAM AND OTHER SECURITY FEATURES NOT LISTED AND DO EXCEED DOCUMENT SECURITY INDUSTRY GUIDELINES.

For terms & conditions and to verify this report, please visit www.igi.org