



ELECTRONIC COPY

LG642492137
Report verification at igi.org



July 19, 2024
IGI Report Number LG642492137
Description LABORATORY GROWN DIAMOND
Shape and Cutting Style CUT CORNERED RECTANGULAR MODIFIED BRILLIANT
Measurements 7.38 X 5.18 X 3.20 MM
GRADING RESULTS
Carat Weight 1.07 CARAT
Color Grade FANCY DEEP GREEN
Clarity Grade VVS 2

LABORATORY GROWN DIAMOND REPORT

July 19, 2024
IGI Report Number LG642492137
Description LABORATORY GROWN DIAMOND
Shape and Cutting Style CUT CORNERED RECTANGULAR MODIFIED BRILLIANT
Measurements 7.38 X 5.18 X 3.20 MM

GRADING RESULTS

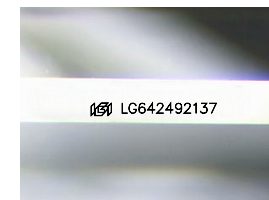
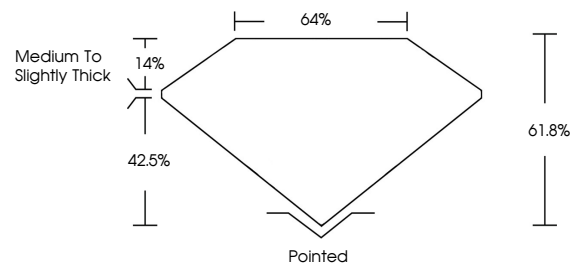
Carat Weight 1.07 CARAT
Color Grade FANCY DEEP GREEN
Clarity Grade VVS 2

ADDITIONAL GRADING INFORMATION

Polish EXCELLENT
Symmetry EXCELLENT
Fluorescence VERY SLIGHT
Inscription(s) LG642492137

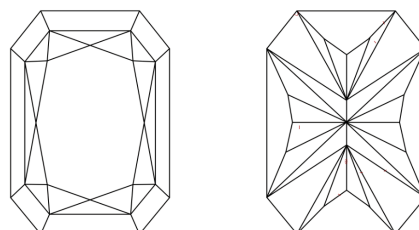
Comments: This Laboratory Grown Diamond was created by Chemical Vapor Deposition (CVD) growth process.
Indications of post-growth treatment.

PROPORTIONS



Sample Image Used

CLARITY CHARACTERISTICS



KEY TO SYMBOLS

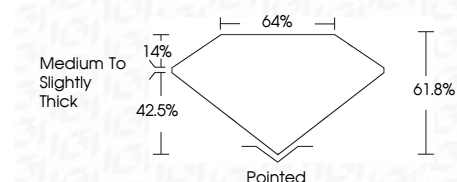
Red symbols indicate internal characteristics.
Green symbols indicate external characteristics.

COLOR

D E F G H I J Faint Very Light Light

CLARITY

Table mapping clarity grades (IF, VVS, VS, SI, I) to descriptions (Internally Flawless, Very Very Slightly Included, etc.)



ADDITIONAL GRADING INFORMATION

Polish EXCELLENT
Symmetry EXCELLENT
Fluorescence VERY SLIGHT
Inscription(s) LG642492137
Comments: This Laboratory Grown Diamond was created by Chemical Vapor Deposition (CVD) growth process.
Indications of post-growth treatment.



July 19, 2024
IGI Report No LG642492137
CUT CORNERED RECT. MODIFIED BRILLIANT
7.38 X 5.18 X 3.20 MM
1.07 CARAT
FANCY DEEP GREEN
VVS 2
61.8%
44%
Medium to Slightly Thick
Pointed
EXCELLENT
EXCELLENT
VERY SLIGHT
EXCELLENT
Inscription(s) LG642492137
Comments: This Laboratory Grown Diamond was created by Chemical Vapor Deposition (CVD) growth process.
Indications of post-growth treatment.