



ELECTRONIC COPY

LABORATORY GROWN DIAMOND REPORT

July 10, 2024  
IGI Report Number LG642493845  
Description LABORATORY GROWN DIAMOND  
Shape and Cutting Style CUT CORNERED RECTANGULAR MODIFIED BRILLIANT  
Measurements 7.02 X 5.04 X 3.41 MM

GRADING RESULTS

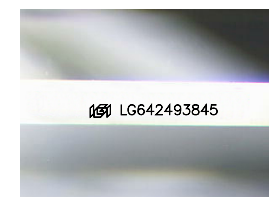
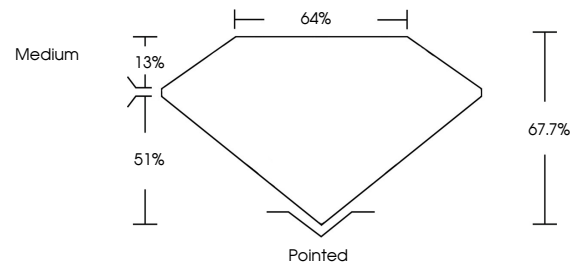
Carat Weight 1.02 CARAT  
Color Grade H  
Clarity Grade VS 2

ADDITIONAL GRADING INFORMATION

Polish EXCELLENT  
Symmetry VERY GOOD  
Fluorescence NONE  
Inscription(s) IGI LG642493845

Comments: This Laboratory Grown Diamond was created by Chemical Vapor Deposition (CVD) growth process.  
Type IIa

PROPORTIONS



Sample Image Used

COLOR

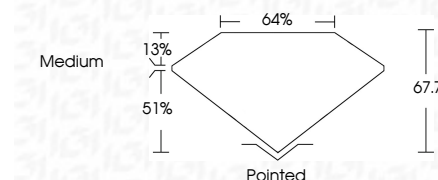
D E F G H I J Faint Very Light Light

CLARITY

IF VS 1-2 VS 1-2 SI 1-2 I 1-3  
Internally Flawless Very Very Slightly Included Very Slightly Included Slightly Included Included



July 10, 2024  
IGI Report Number LG642493845  
Description LABORATORY GROWN DIAMOND  
Shape and Cutting Style CUT CORNERED RECTANGULAR MODIFIED BRILLIANT  
Measurements 7.02 X 5.04 X 3.41 MM  
GRADING RESULTS  
Carat Weight 1.02 CARAT  
Color Grade H  
Clarity Grade VS 2



ADDITIONAL GRADING INFORMATION

Polish EXCELLENT  
Symmetry VERY GOOD  
Fluorescence NONE  
Inscription(s) IGI LG642493845  
Comments: This Laboratory Grown Diamond was created by Chemical Vapor Deposition (CVD) growth process.  
Type IIa



IGI



July 10, 2024  
IGI Report No LG642493845  
CUT CORNERED RECT. MODIFIED BRILLIANT  
7.02 X 5.04 X 3.41 MM  
Carat Weight 1.02 CARAT  
Color Grade H  
Clarity Grade VS 2  
Depth 67.7%  
Table 64%  
Girdle Medium  
Culet Pointed  
Polish EXCELLENT  
Symmetry VERY GOOD  
Fluorescence NONE  
Inscription(s) IGI LG642493845

Comments: This Laboratory Grown Diamond was created by Chemical Vapor Deposition (CVD) growth process.  
Type IIa