



ELECTRONIC COPY

LG642495765
Report verification at igi.org



July 10, 2024
IGI Report Number LG642495765
Description LABORATORY GROWN DIAMOND
Shape and Cutting Style CUT CORNERED RECTANGULAR MODIFIED BRILLIANT
Measurements 8.30 X 5.97 X 4.26 MM
GRADING RESULTS
Carat Weight 1.90 CARAT
Color Grade G
Clarity Grade VS 1

LABORATORY GROWN DIAMOND REPORT

July 10, 2024
IGI Report Number LG642495765
Description LABORATORY GROWN DIAMOND
Shape and Cutting Style CUT CORNERED RECTANGULAR MODIFIED BRILLIANT
Measurements 8.30 X 5.97 X 4.26 MM

GRADING RESULTS

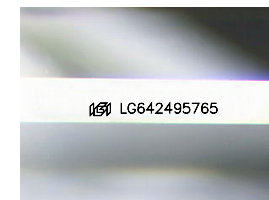
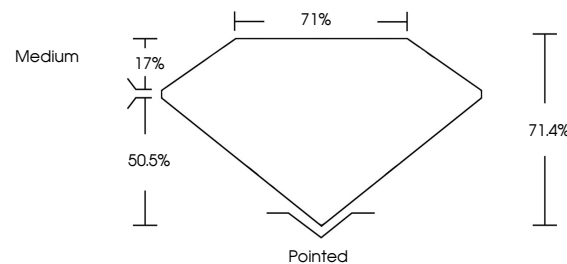
Carat Weight 1.90 CARAT
Color Grade G
Clarity Grade VS 1

ADDITIONAL GRADING INFORMATION

Polish EXCELLENT
Symmetry EXCELLENT
Fluorescence NONE
Inscription(s) LG642495765

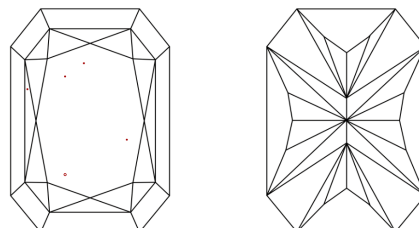
Comments: This Laboratory Grown Diamond was created by Chemical Vapor Deposition (CVD) growth process. Type IIa

PROPORTIONS



Sample Image Used

CLARITY CHARACTERISTICS



KEY TO SYMBOLS

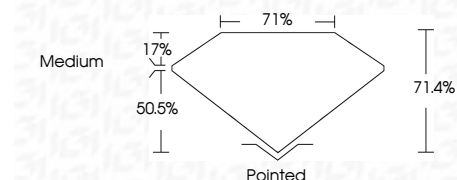
Red symbols indicate internal characteristics.
Green symbols indicate external characteristics.

COLOR

D E F G H I J Faint Very Light Light

CLARITY

Table mapping clarity grades (IF, VVS, VS, SI, I) to descriptions (Internally Flawless, Very Very Slightly Included, etc.)



ADDITIONAL GRADING INFORMATION

Polish EXCELLENT
Symmetry EXCELLENT
Fluorescence NONE
Inscription(s) LG642495765
Comments: This Laboratory Grown Diamond was created by Chemical Vapor Deposition (CVD) growth process. Type IIa



July 10, 2024
IGI Report No LG642495765
CUT CORNERED RECT. MODIFIED BRILLIANT
8.30 X 5.97 X 4.26 MM
1.90 CARAT
G
VS 1
71.4%
Medium
Pointed
EXCELLENT
EXCELLENT
NONE
LG642495765
Comments: This Laboratory Grown Diamond was created by Chemical Vapor Deposition (CVD) growth process. Type IIa