



ELECTRONIC COPY

LABORATORY GROWN DIAMOND REPORT

July 19, 2024
IGI Report Number LG642497445
Description LABORATORY GROWN DIAMOND
Shape and Cutting Style PRINCESS CUT
Measurements 5.49 X 5.47 X 3.97 MM

GRADING RESULTS

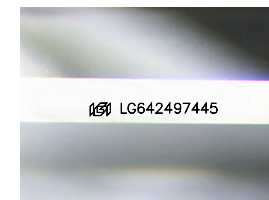
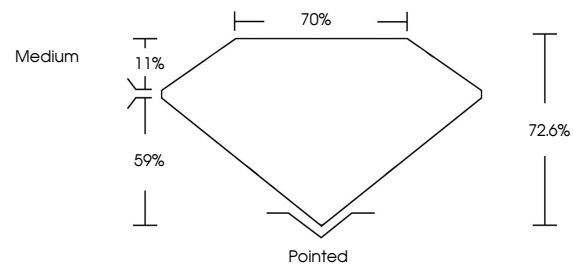
Carat Weight 1.01 CARAT
Color Grade D
Clarity Grade VVS 1

ADDITIONAL GRADING INFORMATION

Polish EXCELLENT
Symmetry VERY GOOD
Fluorescence NONE
Inscription(s) IGI LG642497445

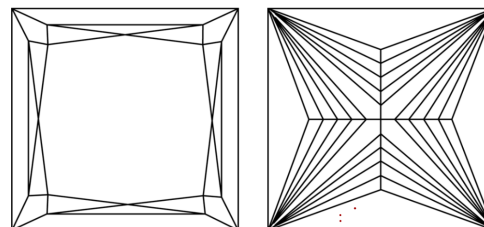
Comments: As Grown - No indication of post-growth treatment.
This Laboratory Grown Diamond was created by High Pressure High Temperature (HPHT) growth process.
Type II

PROPORTIONS



Sample Image Used

CLARITY CHARACTERISTICS



KEY TO SYMBOLS

Red symbols indicate internal characteristics.
Green symbols indicate external characteristics.

COLOR

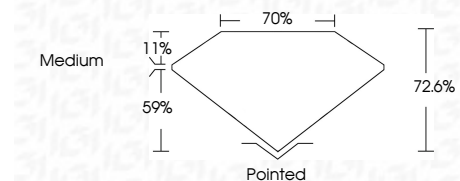
D E F G H I J Faint Very Light Light

CLARITY

IF VS 1-2 VS 1-2 SI 1-2 I 1-3
Internally Flawless Very Very Slightly Included Very Slightly Included Slightly Included Included



July 19, 2024
IGI Report Number LG642497445
Description LABORATORY GROWN DIAMOND
Shape and Cutting Style PRINCESS CUT
Measurements 5.49 X 5.47 X 3.97 MM
GRADING RESULTS
Carat Weight 1.01 CARAT
Color Grade D
Clarity Grade VVS 1



ADDITIONAL GRADING INFORMATION

Polish EXCELLENT
Symmetry VERY GOOD
Fluorescence NONE
Inscription(s) IGI LG642497445
Comments: As Grown - No indication of post-growth treatment.
This Laboratory Grown Diamond was created by High Pressure High Temperature (HPHT) growth process.
Type II



July 19, 2024
IGI Report No. LG642497445
PRINCESS CUT
5.49 X 5.47 X 3.97 MM
1.01 CARAT
D
VVS 1
72.6%
70%
Medium
Pointed
EXCELLENT
VERY GOOD
NONE
IGI LG642497445
Comments: As Grown - No indication of post-growth treatment.
This Laboratory Grown Diamond was created by High Pressure High Temperature (HPHT) growth process.
Type II