



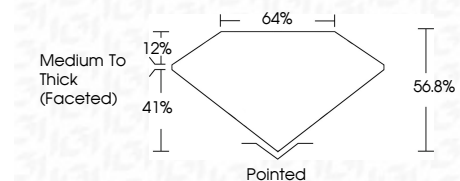
ELECTRONIC COPY

LG642498800
Report verification at igi.org



July 10, 2024
IGI Report Number LG642498800
Description LABORATORY GROWN DIAMOND
Shape and Cutting Style HEART BRILLIANT
Measurements 9.97 X 11.17 X 6.35 MM

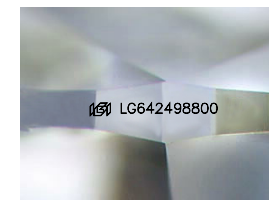
GRADING RESULTS
Carat Weight 4.03 CARATS
Color Grade D
Clarity Grade VS 1



ADDITIONAL GRADING INFORMATION
Polish EXCELLENT
Symmetry EXCELLENT
Fluorescence NONE
Inscription(s) LG642498800
Comments: This Laboratory Grown Diamond was created by Chemical Vapor Deposition (CVD) growth process. Type IIa

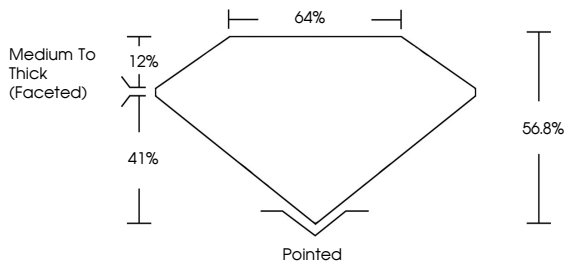


July 10, 2024
IGI Report No LG642498800
HEART BRILLIANT
9.97 X 11.17 X 6.35 MM
4.03 CARATS
D
VS 1
56.8%
41%
64%
Medium To Thick (Faceted)
Pointed
EXCELLENT
EXCELLENT
NONE
Inscription(s) LG642498800
Comments: This Laboratory Grown Diamond was created by Chemical Vapor Deposition (CVD) growth process. Type IIa

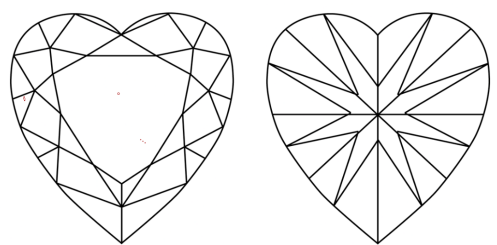


Sample Image Used

PROPORTIONS



CLARITY CHARACTERISTICS



KEY TO SYMBOLS

Red symbols indicate internal characteristics.
Green symbols indicate external characteristics.

COLOR

D E F G H I J Faint Very Light Light

CLARITY

IF VS 1-2 VS 1-2 SI 1-2 I 1-3
Internally Flawless Very Very Slightly Included Very Slightly Included Slightly Included Included



July 10, 2024
IGI Report Number LG642498800
Description LABORATORY GROWN DIAMOND
Shape and Cutting Style HEART BRILLIANT
Measurements 9.97 X 11.17 X 6.35 MM

GRADING RESULTS
Carat Weight 4.03 CARATS
Color Grade D
Clarity Grade VS 1

ADDITIONAL GRADING INFORMATION
Polish EXCELLENT
Symmetry EXCELLENT
Fluorescence NONE
Inscription(s) LG642498800

Comments: This Laboratory Grown Diamond was created by Chemical Vapor Deposition (CVD) growth process. Type IIa