



ELECTRONIC COPY

LG643409490
Report verification at igi.org



July 19, 2024

IGI Report Number **LG643409490**

Description **LABORATORY GROWN DIAMOND**

Shape and Cutting Style **EMERALD CUT**

Measurements **9.68 X 6.48 X 4.34 MM**

GRADING RESULTS

Carat Weight **2.61 CARATS**

Color Grade **FANCY INTENSE BLUE**

Clarity Grade **VS 1**

LABORATORY GROWN DIAMOND REPORT

July 19, 2024

IGI Report Number **LG643409490**

Description **LABORATORY GROWN DIAMOND**

Shape and Cutting Style **EMERALD CUT**

Measurements **9.68 X 6.48 X 4.34 MM**

GRADING RESULTS

Carat Weight **2.61 CARATS**

Color Grade **FANCY INTENSE BLUE**

Clarity Grade **VS 1**

ADDITIONAL GRADING INFORMATION

Polish **EXCELLENT**

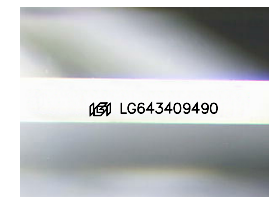
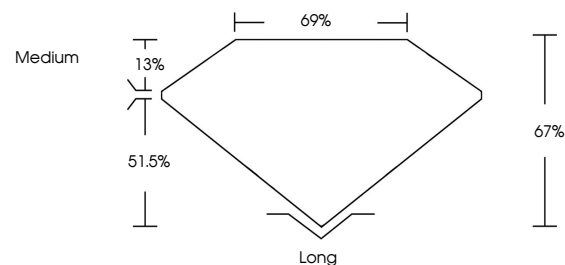
Symmetry **EXCELLENT**

Fluorescence **NONE**

Inscription(s) **IGI LG643409490**

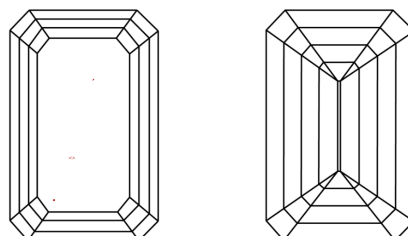
Comments: This Laboratory Grown Diamond was created by Chemical Vapor Deposition (CVD) growth process. Indications of post-growth treatment.

PROPORTIONS



Sample Image Used

CLARITY CHARACTERISTICS



KEY TO SYMBOLS

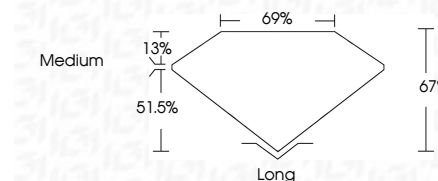
Red symbols indicate internal characteristics.
Green symbols indicate external characteristics.

COLOR

D E F G H I J Faint Very Light Light

CLARITY

IF	VS ¹⁻²	VS ¹⁻²	SI ¹⁻²	I ¹⁻³
Internally Flawless	Very Very Slightly Included	Very Slightly Included	Slightly Included	Included



ADDITIONAL GRADING INFORMATION

Polish **EXCELLENT**

Symmetry **EXCELLENT**

Fluorescence **NONE**

Inscription(s) **IGI LG643409490**

Comments: This Laboratory Grown Diamond was created by Chemical Vapor Deposition (CVD) growth process. Indications of post-growth treatment.



July 19, 2024
IGI Report No. **LG643409490**
EMERALD CUT

2.61 CARATS
Carat Weight
FANCY INTENSE BLUE
Color Grade

VS 1
Clarity Grade
67%
Depth
67%
Table
Medium
Girdle

Long
Culet
EXCELLENT
Polish
EXCELLENT
Symmetry
NONE
Fluorescence
IGI LG643409490
Inscription(s)

Comments: This Laboratory Grown Diamond was created by Chemical Vapor Deposition (CVD) growth process. Indications of post-growth treatment.