



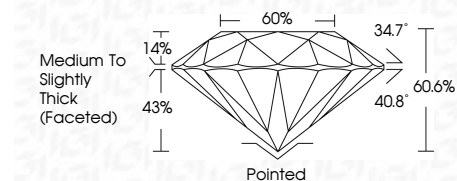
ELECTRONIC COPY

LG643409961 Report verification at igi.org



July 12, 2024 IGI Report Number LG643409961 Description LABORATORY GROWN DIAMOND Shape and Cutting Style ROUND BRILLIANT Measurements 6.57 - 6.60 X 3.99 MM

GRADING RESULTS Carat Weight 1.07 CARAT Color Grade F Clarity Grade VVS 1 Cut Grade IDEAL

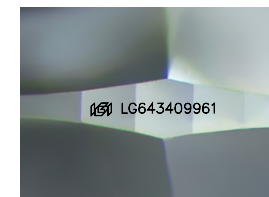


ADDITIONAL GRADING INFORMATION Polish EXCELLENT Symmetry EXCELLENT Fluorescence NONE Inscription(s) IGI LG643409961 Comments: This Laboratory Grown Diamond was created by Chemical Vapor Deposition (CVD) growth process. Type IIa



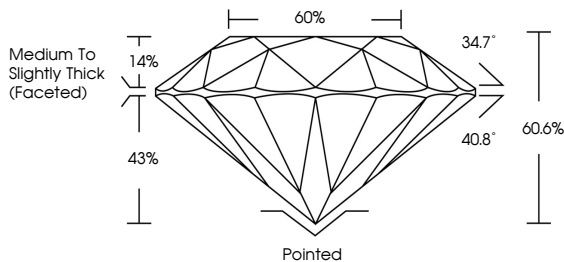
July 12, 2024 IGI Report No. LG643409961 ROUND BRILLIANT 6.57 - 6.60 X 3.99 MM 1.07 CARAT F VVS 1 IDEAL 60.6% 66% Medium To Slightly Thick (Faceted) Pointed EXCELLENT EXCELLENT NONE IGI LG643409961

Comments: This Laboratory Grown Diamond was created by Chemical Vapor Deposition (CVD) growth process. Type IIa

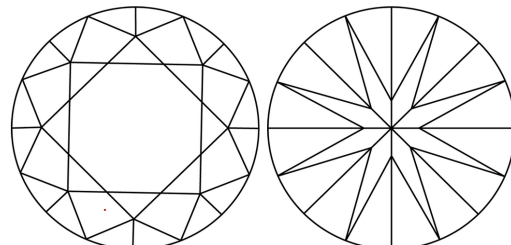


Sample Image Used

PROPORTIONS



CLARITY CHARACTERISTICS



KEY TO SYMBOLS Red symbols indicate internal characteristics. Green symbols indicate external characteristics.

COLOR scale: D, E, F, G, H, I, J, Faint, Very Light, Light

CLARITY scale: IF, VVS 1-2, VS 1-2, SI 1-2, I 1-3; Internally Flawless, Very Very Slightly Included, Very Slightly Included, Slightly Included, Included



July 12, 2024 IGI Report Number LG643409961 Description LABORATORY GROWN DIAMOND Shape and Cutting Style ROUND BRILLIANT Measurements 6.57 - 6.60 X 3.99 MM

GRADING RESULTS Carat Weight 1.07 CARAT Color Grade F Clarity Grade VVS 1 Cut Grade IDEAL

ADDITIONAL GRADING INFORMATION Polish EXCELLENT Symmetry EXCELLENT Fluorescence NONE Inscription(s) IGI LG643409961

Comments: This Laboratory Grown Diamond was created by Chemical Vapor Deposition (CVD) growth process. Type IIa