



**ELECTRONIC COPY**

LG643410774  
Report verification at igi.org



July 12, 2024

IGI Report Number **LG643410774**

Description **LABORATORY GROWN DIAMOND**

Shape and Cutting Style **CUSHION MIXED CUT**

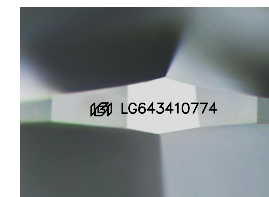
Measurements **8.94 X 5.56 X 3.46 MM**

**GRADING RESULTS**

Carat Weight **1.53 CARAT**

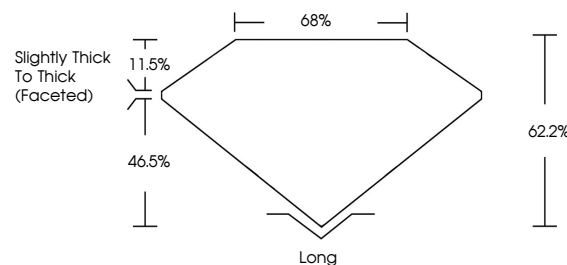
Color Grade **E**

Clarity Grade **VS 1**

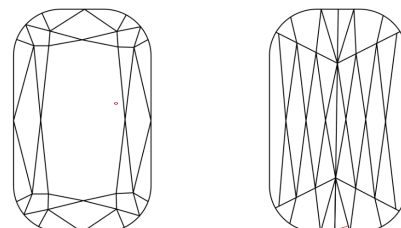


Sample Image Used

**PROPORTIONS**



**CLARITY CHARACTERISTICS**



**KEY TO SYMBOLS**

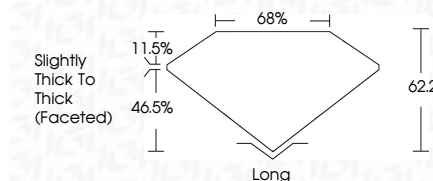
Red symbols indicate internal characteristics.  
Green symbols indicate external characteristics.

**COLOR**

D E F G H I J Faint Very Light Light

**CLARITY**

IF	VS <sup>1-2</sup>	VS <sup>1-2</sup>	SI <sup>1-2</sup>	I <sup>1-3</sup>
Internally Flawless	Very Very Slightly Included	Very Slightly Included	Slightly Included	Included



**ADDITIONAL GRADING INFORMATION**

Polish **EXCELLENT**

Symmetry **EXCELLENT**

Fluorescence **NONE**

Inscription(s) **IGI LG643410774**

Comments: This Laboratory Grown Diamond was created by Chemical Vapor Deposition (CVD) growth process.  
Type IIa



**IGI**



July 12, 2024  
IGI Report No LG643410774  
CUSHION MIXED CUT  
8.94 X 5.56 X 3.46 MM  
Carat Weight 1.53 CARAT  
Color Grade E  
Clarity Grade VS 1  
Depth 62.2%  
Table 65%  
Girdle Slightly Thick To Thick (Faceted)  
Culet Long  
Polish EXCELLENT  
Symmetry EXCELLENT  
Fluorescence NONE  
Inscription(s) IGI LG643410774  
Comments: This Laboratory Grown Diamond was created by Chemical Vapor Deposition (CVD) growth process.  
Type IIa