



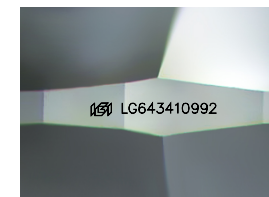
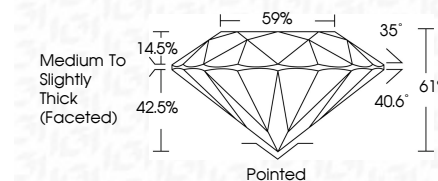
**ELECTRONIC COPY**

LG643410992  
Report verification at igi.org



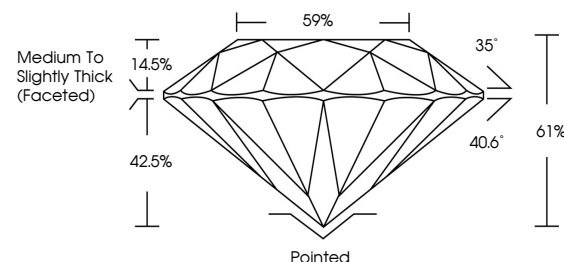
July 11, 2024  
IGI Report Number **LG643410992**  
Description **LABORATORY GROWN DIAMOND**  
Shape and Cutting Style **ROUND BRILLIANT**  
Measurements **6.49 - 6.54 X 3.97 MM**

**GRADING RESULTS**  
Carat Weight **1.04 CARAT**  
Color Grade **E**  
Clarity Grade **VS 1**  
Cut Grade **IDEAL**

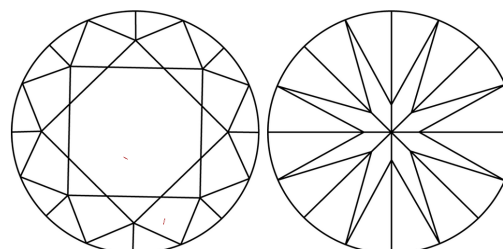


Sample Image Used

**PROPORTIONS**



**CLARITY CHARACTERISTICS**



**KEY TO SYMBOLS**

Red symbols indicate internal characteristics.  
Green symbols indicate external characteristics.

**COLOR**

D E F G H I J Faint Very Light Light

**CLARITY**

IF	VS <sup>1-2</sup>	VS <sup>1-2</sup>	SI <sup>1-2</sup>	I <sup>1-3</sup>
Internally Flawless	Very Very Slightly Included	Very Slightly Included	Slightly Included	Included

**ADDITIONAL GRADING INFORMATION**

Polish **EXCELLENT**  
Symmetry **EXCELLENT**  
Fluorescence **NONE**  
Inscription(s) **IGI LG643410992**  
Comments: As Grown - No indication of post-growth treatment.  
This Laboratory Grown Diamond was created by High Pressure High Temperature (HPHT) growth process.  
Type II



July 11, 2024  
IGI Report No. **LG643410992**  
**ROUND BRILLIANT**  
6.49 - 6.54 X 3.97 MM  
1.04 CARAT  
E  
VS 1  
IDEAL  
61%  
59%  
Medium To Slightly Thick (Faceted)  
Pointed  
EXCELLENT  
EXCELLENT  
NONE  
IGI LG643410992  
Comments: As Grown - No indication of post-growth treatment.  
This Laboratory Grown Diamond was created by High Pressure High Temperature (HPHT) growth process.  
Type II

