



ELECTRONIC COPY

LG643412573
Report verification at igi.org



July 10, 2024

IGI Report Number **LG643412573**

Description **LABORATORY GROWN DIAMOND**

Shape and Cutting Style **PRINCESS CUT**

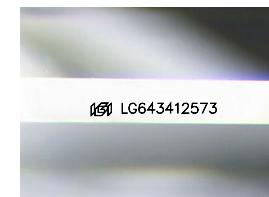
Measurements **5.60 X 5.57 X 3.84 MM**

GRADING RESULTS

Carat Weight **1.08 CARAT**

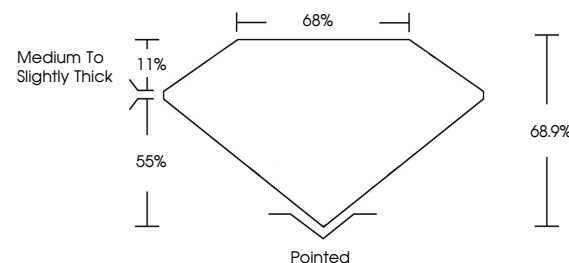
Color Grade **F**

Clarity Grade **VS 1**

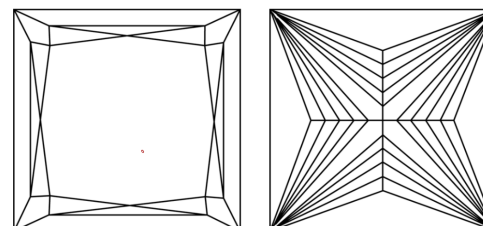


Sample Image Used

PROPORTIONS



CLARITY CHARACTERISTICS



KEY TO SYMBOLS

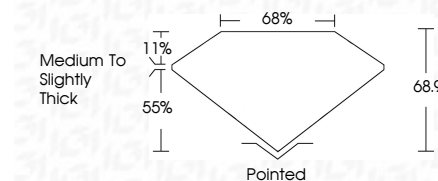
Red symbols indicate internal characteristics.
Green symbols indicate external characteristics.

COLOR

D E F G H I J Faint Very Light Light

CLARITY

IF	VS ¹⁻²	VS ¹⁻²	SI ¹⁻²	I ¹⁻³
Internally Flawless	Very Very Slightly Included	Very Slightly Included	Slightly Included	Included



ADDITIONAL GRADING INFORMATION

Polish **EXCELLENT**

Symmetry **VERY GOOD**

Fluorescence **NONE**

Inscription(s) **IGI LG643412573**

Comments: This Laboratory Grown Diamond was created by Chemical Vapor Deposition (CVD) growth process.
Type IIa



IGI



July 10, 2024
IGI Report No. LG643412573
PRINCESS CUT
5.60 X 5.57 X 3.84 MM
1.08 CARAT
F
VS 1
68.9%
65%
Medium to Slightly Thick
Pointed
EXCELLENT
VERY GOOD
NONE
IGI LG643412573
Comments: This Laboratory Grown Diamond was created by Chemical Vapor Deposition (CVD) growth process.
Type IIa