



ELECTRONIC COPY

LG643416680
Report verification at igi.org



July 19, 2024
IGI Report Number LG643416680
Description LABORATORY GROWN DIAMOND
Shape and Cutting Style CUT CORNERED RECTANGULAR MODIFIED BRILLIANT
Measurements 7.34 X 5.28 X 3.69 MM
GRADING RESULTS
Carat Weight 1.39 CARAT
Color Grade FANCY INTENSE PINK
Clarity Grade VS 1

LABORATORY GROWN DIAMOND REPORT

July 19, 2024
IGI Report Number LG643416680
Description LABORATORY GROWN DIAMOND
Shape and Cutting Style CUT CORNERED RECTANGULAR MODIFIED BRILLIANT
Measurements 7.34 X 5.28 X 3.69 MM

GRADING RESULTS

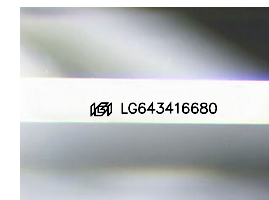
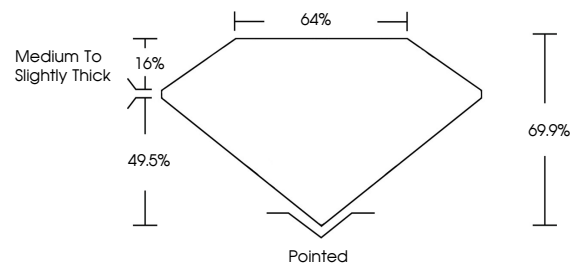
Carat Weight 1.39 CARAT
Color Grade FANCY INTENSE PINK
Clarity Grade VS 1

ADDITIONAL GRADING INFORMATION

Polish EXCELLENT
Symmetry EXCELLENT
Fluorescence SLIGHT
Inscription(s) LG643416680

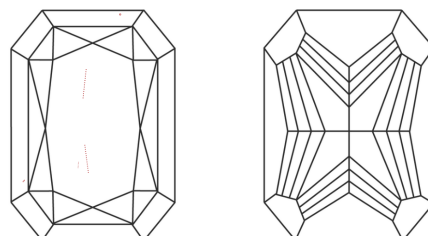
Comments: This Laboratory Grown Diamond was created by Chemical Vapor Deposition (CVD) growth process.
Indications of post-growth treatment.

PROPORTIONS



Sample Image Used

CLARITY CHARACTERISTICS



KEY TO SYMBOLS

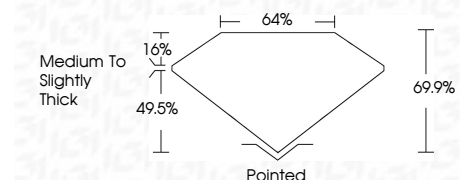
Red symbols indicate internal characteristics.
Green symbols indicate external characteristics.

COLOR

D E F G H I J Faint Very Light Light

CLARITY

Table with columns for clarity grades: IF, VS 1-2, VS 1-2, SI 1-2, I 1-3 and their corresponding descriptions: Internally Flawless, Very Very Slightly Included, Very Slightly Included, Slightly Included, Included.



ADDITIONAL GRADING INFORMATION

Polish EXCELLENT
Symmetry EXCELLENT
Fluorescence SLIGHT
Inscription(s) LG643416680
Comments: This Laboratory Grown Diamond was created by Chemical Vapor Deposition (CVD) growth process.
Indications of post-growth treatment.



July 19, 2024
IGI Report No LG643416680
CUT CORNERED RECT. MODIFIED BRILLIANT
7.34 X 5.28 X 3.69 MM
1.39 CARAT
FANCY INTENSE PINK
VS 1
69.9%
49.5%
Medium to Slightly Thick
Pointed
EXCELLENT
EXCELLENT
SLIGHT
LG643416680
Comments: This Laboratory Grown Diamond was created by Chemical Vapor Deposition (CVD) growth process.
Indications of post-growth treatment.