



ELECTRONIC COPY

LG643417468 Report verification at igi.org



July 13, 2024 IGI Report Number LG643417468 Description LABORATORY GROWN DIAMOND Shape and Cutting Style ROUND BRILLIANT Measurements 9.29 - 9.33 X 5.88 MM GRADING RESULTS Carat Weight 3.19 CARATS Color Grade E Clarity Grade VVS 2 Cut Grade EXCELLENT

July 13, 2024 IGI Report Number LG643417468 Description LABORATORY GROWN DIAMOND Shape and Cutting Style ROUND BRILLIANT Measurements 9.29 - 9.33 X 5.88 MM

GRADING RESULTS

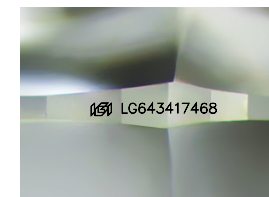
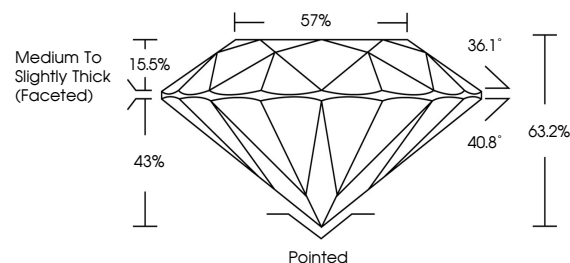
Carat Weight 3.19 CARATS Color Grade E Clarity Grade VVS 2 Cut Grade EXCELLENT

ADDITIONAL GRADING INFORMATION

Polish EXCELLENT Symmetry EXCELLENT Fluorescence NONE Inscription(s) IGI LG643417468

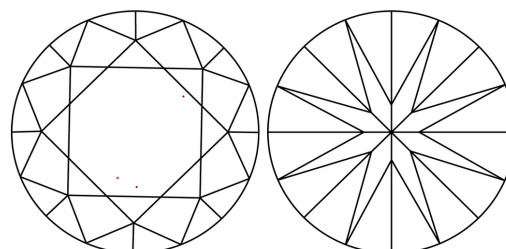
Comments: This Laboratory Grown Diamond was created by Chemical Vapor Deposition (CVD) growth process. Type IIa

PROPORTIONS



Sample Image Used

CLARITY CHARACTERISTICS



KEY TO SYMBOLS

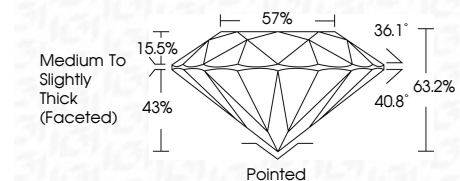
Red symbols indicate internal characteristics. Green symbols indicate external characteristics.

COLOR

D E F G H I J Faint Very Light Light

CLARITY

IF VVS 1-2 VS 1-2 SI 1-2 I 1-3 Internally Flawless Very Very Slightly Included Very Slightly Included Slightly Included Included



ADDITIONAL GRADING INFORMATION

Polish EXCELLENT Symmetry EXCELLENT Fluorescence NONE Inscription(s) IGI LG643417468 Comments: This Laboratory Grown Diamond was created by Chemical Vapor Deposition (CVD) growth process. Type IIa



Summary table with columns: July 13, 2024, IGI Report No. LG643417468, ROUND BRILLIANT, 9.29 - 9.33 X 5.88 MM, 3.19 CARATS, E, VVS 2, EXCELLENT, 63.2%, 57%, Medium To Slightly Thick (Faceted), Pointed, EXCELLENT, EXCELLENT, NONE, IGI LG643417468. Comments: This Laboratory Grown Diamond was created by Chemical Vapor Deposition (CVD) growth process. Type IIa