



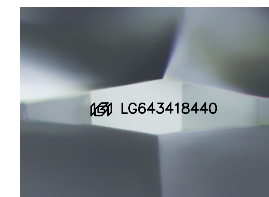
**ELECTRONIC COPY**

LG643418440  
Report verification at [igi.org](http://igi.org)



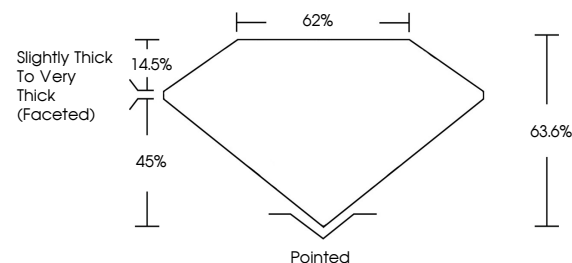
July 12, 2024  
IGI Report Number **LG643418440**  
Description **LABORATORY GROWN DIAMOND**  
Shape and Cutting Style **SQUARE CUSHION BRILLIANT**  
Measurements **10.62 X 10.27 X 6.53 MM**

**GRADING RESULTS**  
Carat Weight **6.43 CARATS**  
Color Grade **E**  
Clarity Grade **VS 1**

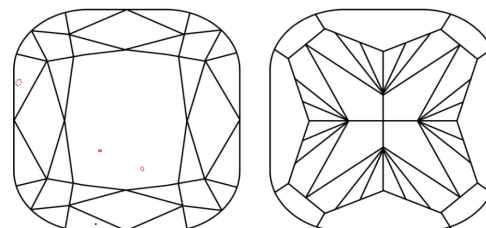


Sample Image Used

**PROPORTIONS**



**CLARITY CHARACTERISTICS**



**KEY TO SYMBOLS**

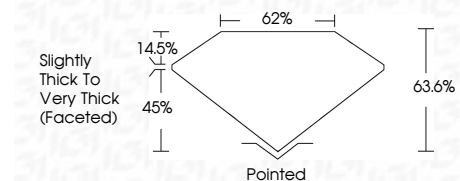
Red symbols indicate internal characteristics.  
Green symbols indicate external characteristics.

**COLOR**

D E F G H I J Faint Very Light Light

**CLARITY**

IF	VS <sup>1-2</sup>	VS <sup>1-2</sup>	SI <sup>1-2</sup>	I <sup>1-3</sup>
Internally Flawless	Very Very Slightly Included	Very Slightly Included	Slightly Included	Included



**ADDITIONAL GRADING INFORMATION**

Polish **EXCELLENT**  
Symmetry **EXCELLENT**  
Fluorescence **NONE**  
Inscription(s) **IGI LG643418440**  
Comments: This Laboratory Grown Diamond was created by Chemical Vapor Deposition (CVD) growth process.  
Type IIa



July 12, 2024  
IGI Report No **LG643418440**  
**SQUARE CUSHION BRILLIANT**  
**10.62 X 10.27 X 6.53 MM**  
Carat Weight **6.43 CARATS**  
Color Grade **E**  
Clarity Grade **VS 1**  
Depth **63.6%**  
Table **62%**  
Girdle **Slightly Thick To Very Thick (Faceted)**  
Culet **Pointed**  
Polish **EXCELLENT**  
Symmetry **EXCELLENT**  
Fluorescence **NONE**  
Inscription(s) **IGI LG643418440**  
Comments: This Laboratory Grown Diamond was created by Chemical Vapor Deposition (CVD) growth process.  
Type IIa