



**INTERNATIONAL
GEMOLOGICAL
INSTITUTE**

Electronic COPY

LG643422979

LABORATORY GROWN DIAMOND REPORT

July 12, 2024
 IGI Report Number **LG643422979**
 Description **LABORATORY GROWN DIAMOND**
 Shape and Cutting Style **ROUND BRILLIANT**
 Measurements **6.28 - 6.30 X 3.77 MM**

GRADING RESULTS

Carat Weight **0.91 CARAT**
 Color Grade **E**
 Clarity Grade **VVS 2**
 Cut Grade **IDEAL**

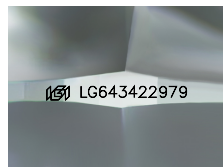
ADDITIONAL GRADING INFORMATION

Polish **EXCELLENT**
 Symmetry **EXCELLENT**
 Fluorescence **NONE**
 Inscription(s) **IGI LG643422979**

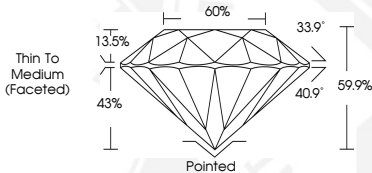
Comments: HEARTS & ARROWS
 This Laboratory Grown Diamond was created by Chemical Vapor
 Deposition (CVD) growth process.
 Type Iia



HEARTS & ARROWS



Sample Image Used



July 12, 2024
 IGI Report Number **LG643422979**
ROUND BRILLIANT
LABORATORY GROWN DIAMOND
6.28 - 6.30 X 3.77 MM
 Carat Weight **0.91 CARAT**
 Color Grade **E**
 Clarity Grade **VVS 2**
 Cut Grade **IDEAL**
 Polish **EXCELLENT**
 Symmetry **EXCELLENT**
 Fluorescence **NONE**
 Inscription(s) **IGI LG643422979**
 Comments: HEARTS & ARROWS This Laboratory Grown Diamond was created by Chemical Vapor Deposition (CVD) growth process. Type Iia



July 12, 2024
 IGI Report Number **LG643422979**
ROUND BRILLIANT
LABORATORY GROWN DIAMOND
6.28 - 6.30 X 3.77 MM
 Carat Weight **0.91 CARAT**
 Color Grade **E**
 Clarity Grade **VVS 2**
 Cut Grade **IDEAL**
 Polish **EXCELLENT**
 Symmetry **EXCELLENT**
 Fluorescence **NONE**
 Inscription(s) **IGI LG643422979**
 Comments: HEARTS & ARROWS This Laboratory Grown Diamond was created by Chemical Vapor Deposition (CVD) growth process. Type Iia

THIS DOCUMENT WAS PRODUCED WITH THE FOLLOWING SECURITY MEASURES: SPECIAL DOCUMENT PAPER, INK SCREENS, WATERMARK, BACKGROUND DESIGNS, HOLOGRAM AND OTHER SECURITY FEATURES NOT LISTED AND DO EXCEED DOCUMENT SECURITY INDUSTRY GUIDELINES.

For terms & conditions and to verify this report, please visit www.igi.org