



ELECTRONIC COPY

LG643428414
Report verification at igi.org



July 15, 2024
IGI Report Number **LG643428414**
Description **LABORATORY GROWN DIAMOND**
Shape and Cutting Style **ROUND BRILLIANT**
Measurements **6.50 - 6.52 X 4.00 MM**
GRADING RESULTS
Carat Weight **1.04 CARAT**
Color Grade **E**
Clarity Grade **VVS 1**
Cut Grade **IDEAL**

LABORATORY GROWN DIAMOND REPORT

July 15, 2024
IGI Report Number **LG643428414**
Description **LABORATORY GROWN DIAMOND**
Shape and Cutting Style **ROUND BRILLIANT**
Measurements **6.50 - 6.52 X 4.00 MM**

GRADING RESULTS

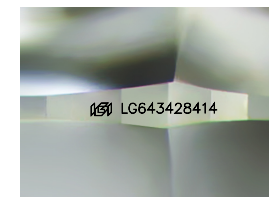
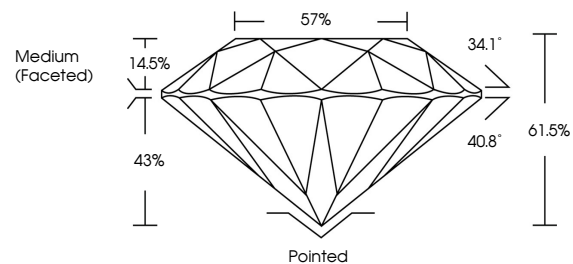
Carat Weight **1.04 CARAT**
Color Grade **E**
Clarity Grade **VVS 1**
Cut Grade **IDEAL**

ADDITIONAL GRADING INFORMATION

Polish **EXCELLENT**
Symmetry **EXCELLENT**
Fluorescence **NONE**
Inscription(s) **IGI LG643428414**

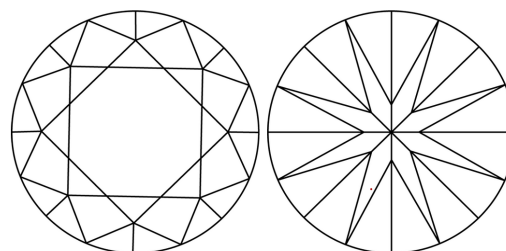
Comments: This Laboratory Grown Diamond was created by Chemical Vapor Deposition (CVD) growth process. Type IIa

PROPORTIONS



Sample Image Used

CLARITY CHARACTERISTICS



KEY TO SYMBOLS

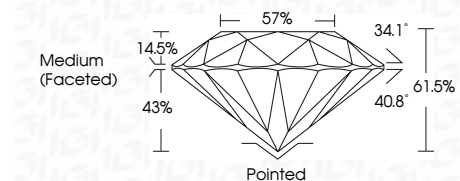
Red symbols indicate internal characteristics.
Green symbols indicate external characteristics.

COLOR

D E F G H I J Faint Very Light Light

CLARITY

IF	VS ¹⁻²	VS ¹⁻²	SI ¹⁻²	I ¹⁻³
Internally Flawless	Very Very Slightly Included	Very Slightly Included	Slightly Included	Included



ADDITIONAL GRADING INFORMATION

Polish **EXCELLENT**
Symmetry **EXCELLENT**
Fluorescence **NONE**
Inscription(s) **IGI LG643428414**
Comments: This Laboratory Grown Diamond was created by Chemical Vapor Deposition (CVD) growth process. Type IIa



July 15, 2024
IGI Report No LG643428414
ROUND BRILLIANT
6.50 - 6.52 X 4.00 MM
1.04 CARAT
E
VVS 1
IDEAL
6.50
57%
Medium (Faceted)

Pointed
EXCELLENT
EXCELLENT
NONE
IGI LG643428414

Cutler
Polish
Symmetry
Fluorescence
Inscriptions(s)

Comments: This Laboratory Grown Diamond was created by Chemical Vapor Deposition (CVD) growth process. Type IIa

