



ELECTRONIC COPY

LG643428419
Report verification at igi.org



July 15, 2024

IGI Report Number **LG643428419**

Description **LABORATORY GROWN DIAMOND**

Shape and Cutting Style **PRINCESS CUT**

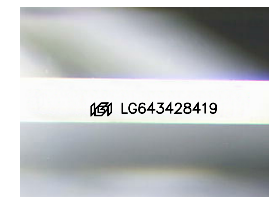
Measurements **5.66 X 5.59 X 3.88 MM**

GRADING RESULTS

Carat Weight **1.07 CARAT**

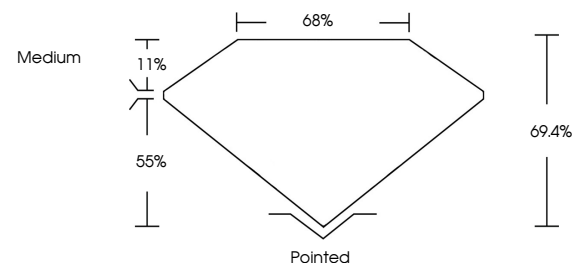
Color Grade **D**

Clarity Grade **VVS 1**

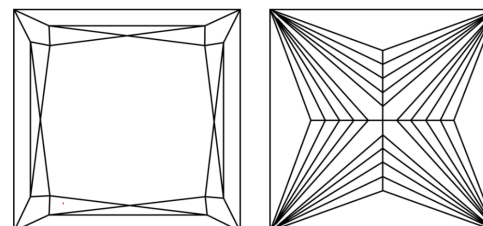


Sample Image Used

PROPORTIONS



CLARITY CHARACTERISTICS



KEY TO SYMBOLS

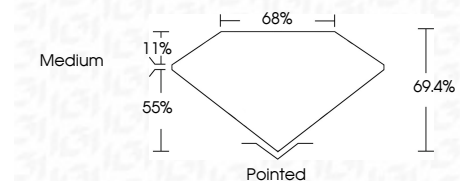
Red symbols indicate internal characteristics.
Green symbols indicate external characteristics.

COLOR

D E F G H I J Faint Very Light Light

CLARITY

IF	VS ¹⁻²	VS ¹⁻²	SI ¹⁻²	I ¹⁻³
Internally Flawless	Very Very Slightly Included	Very Slightly Included	Slightly Included	Included



ADDITIONAL GRADING INFORMATION

Polish **EXCELLENT**

Symmetry **EXCELLENT**

Fluorescence **NONE**

Inscription(s) **IGI LG643428419**

Comments: This Laboratory Grown Diamond was created by Chemical Vapor Deposition (CVD) growth process.
Type IIa



IGI



July 15, 2024
IGI Report No. LG643428419
PRINCESS CUT

1.07 CARAT
D

5.66 X 5.59 X 3.88 MM
Color Grade D
Clarity Grade VVS 1
Depth 69.4%
Table 55%
Girdle Medium

Pointed
EXCELLENT
EXCELLENT
NONE
IGI LG643428419

Comments: This Laboratory Grown Diamond was created by Chemical Vapor Deposition (CVD) growth process.
Type IIa