



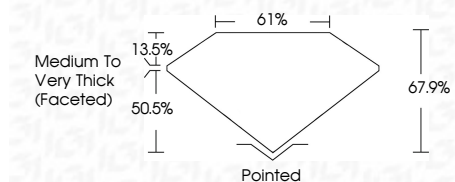
ELECTRONIC COPY

LG643429351
Report verification at igi.org



July 15, 2024
IGI Report Number LG643429351
Description LABORATORY GROWN DIAMOND
Shape and Cutting Style SQUARE CUSHION BRILLIANT
Measurements 7.76 X 7.59 X 5.15 MM

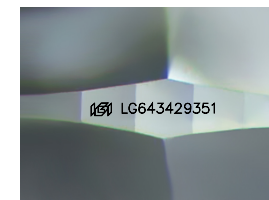
GRADING RESULTS
Carat Weight 2.37 CARATS
Color Grade F
Clarity Grade VVS 2



ADDITIONAL GRADING INFORMATION
Polish EXCELLENT
Symmetry EXCELLENT
Fluorescence NONE
Inscription(s) LG643429351
Comments: This Laboratory Grown Diamond was created by Chemical Vapor Deposition (CVD) growth process. Type IIa

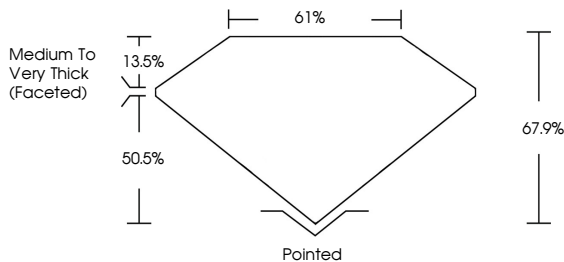


July 15, 2024
IGI Report No LG643429351
SQUARE CUSHION BRILLIANT
7.76 X 7.59 X 5.15 MM
2.37 CARATS
F
VVS 2
67.9%
61%
Medium to Very Thick (Faceted)
Pointed
EXCELLENT
EXCELLENT
NONE
IGI LG643429351
Comments: This Laboratory Grown Diamond was created by Chemical Vapor Deposition (CVD) growth process. Type IIa

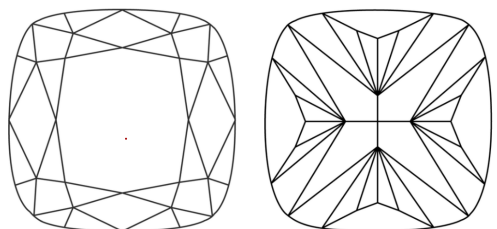


Sample Image Used

PROPORTIONS



CLARITY CHARACTERISTICS



KEY TO SYMBOLS
Red symbols indicate internal characteristics.
Green symbols indicate external characteristics.

Table with columns for color grades: D, E, F, G, H, I, J, Faint, Very Light, Light

Table with columns for clarity grades: IF, VS 1-2, VS 1-2, SI 1-2, I 1-3, Internally Flawless, Very Very Slightly Included, Very Slightly Included, Slightly Included, Included



July 15, 2024
IGI Report Number LG643429351
Description LABORATORY GROWN DIAMOND
Shape and Cutting Style SQUARE CUSHION BRILLIANT
Measurements 7.76 X 7.59 X 5.15 MM
GRADING RESULTS
Carat Weight 2.37 CARATS
Color Grade F
Clarity Grade VVS 2
ADDITIONAL GRADING INFORMATION
Polish EXCELLENT
Symmetry EXCELLENT
Fluorescence NONE
Inscription(s) LG643429351

Comments: This Laboratory Grown Diamond was created by Chemical Vapor Deposition (CVD) growth process. Type IIa